

# Directions to Imaging (Ultrasound) at UPMC Mercy

from the Spina Bifida Clinic at UPMC Mercy Pavilion

**UPMC** LIFE  
CHANGING  
MEDICINE



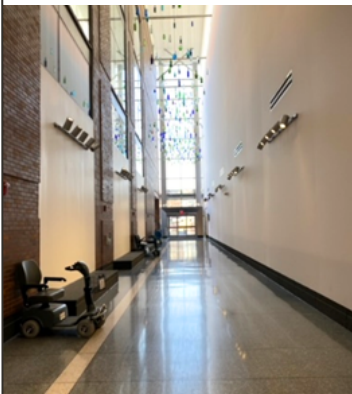
## Step 1

Take the elevators by the parking garage doors to the Ground Level.



## Step 5

Use the purple elevators in front of you when you enter the building to go to the 3rd floor.



## Step 2

Exit the Mercy Pavilion through the lobby.



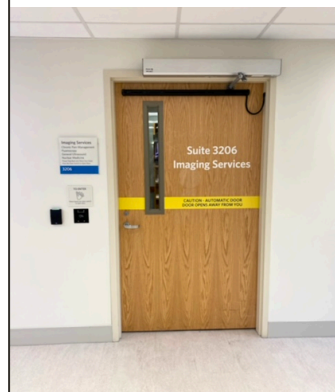
## Step 6

On the 3rd floor, follow the blue signs for Radiology, Imaging Services.



## Step 3

Cross Marion Street toward UPMC Mercy (the main hospital building).



## Step 7

Enter Suite 3206 for Imaging.



## Step 4

Go past the Main Entrance and enter the building through the West Entrance (marked with a blue 1).

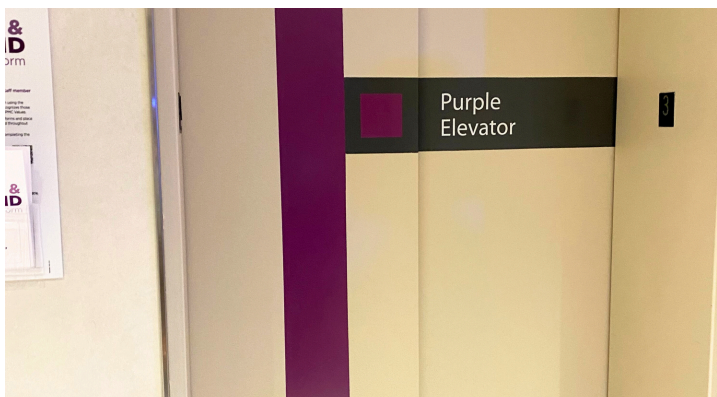
**After your ultrasound, our staff can contact Transport to help you get to Outpatient Testing for blood work.**

# Directions to Outpatient Testing from Imaging (Ultrasound) at UPMC Mercy



## Step 1

After completing your ultrasound, return to the purple elevators.



## Step 2

Take the purple elevator to Floor 1.



## Step 3

Follow the signs toward the Main Entrance.



## Step 4

Outpatient Testing is located at the entrance of the bridge to the UPMC Mercy Parking Garage.