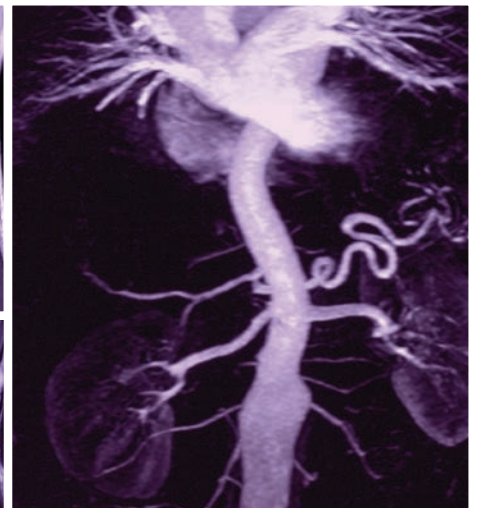
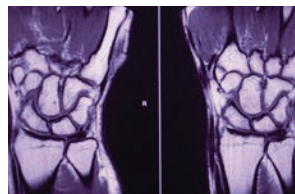
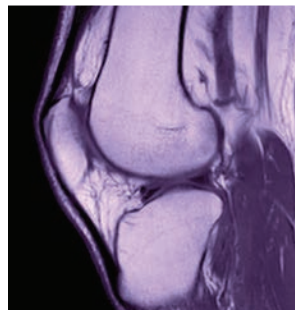


UPMC Imaging Services

Locations and Services Guide

Updated January 2025



UPMC | **IMAGING
SERVICES**

Southwest PA

	LOCATION	PHONE	FAX	GENERAL DIAGNOSTICS	CT	MRI	MRI WIDE BORE	US	PERI. VASC.	NUC. MED.	IR/ VASC.	PET-CT	MAMMO.	DXA	NPI #	FACILITY ID	ADDRESS	CITY	STATE	ZIP	
Southwest PA	Hospitals																				
	UPMC Passavant-Cranberry	412-647-9729	724-772-0744	■	■*	■**	■	■	■	■		■		■	1225047699	390107	1 St. Francis Way	Cranberry Township	PA	16066	
	UPMC Horizon-Shenango Valley	724-983-8864	724-981-7947	■	■	■*	■	■	■	■	■	■			1225048838	390178	2200 Memorial Drive	Farrell	PA	16121	
	UPMC Horizon-Greenville	724-589-6681	724-588-6366	■	■*	■*		■	■	■	■		■	■	1225048838	390178	110 North Main St.	Greenville	PA	16125	
	UPMC McKeesport	412-647-9729	412-664-2398	■	■*	■**	■	■	■	■	■		■	■	1194734798	390008	1500 Fifth Ave.	McKeesport	PA	15132	
	UPMC East	412-647-9729	412-357-3729	■	■	■	■	■	■	■	■				1225323983	390328	2775 Mosside Blvd.	Monroeville	PA	15146	
	UPMC Jameson	724-656-4220	724-656-4165	■	■*	■		■	■	■	■				1477538312		1211 Wilmington Ave.	New Castle	PA	16105	
	UPMC Magee-Womens Hospital (Third Floor Radiology)	412-647-9729	412-641-1078	■				■		■	■				1952311508	390114	300 Halket St., Third Floor	Pittsburgh	PA	15213	
	UPMC Magee-Womens Hospital (Zero Level Radiology)	412-647-9729	412-641-8084		■	■*							■		1952311508	390114	300 Halket St., Zero Level	Pittsburgh	PA	15213	
	UPMC Magee-Womens Hospital (OB/GYN Ultrasound)	412-641-4505, Option 1	412-641-1371					■							1952311508	390114	300 Halket St., Suite 1640	Pittsburgh	PA	15213	
	UPMC Magee-Womens Imaging-UPMC Magee-Womens Hospital	1-800-649-4077	412-687-5451					■						■	1952311508	390114	300 Halket St., Suite 3600	Pittsburgh	PA	15213	
	UPMC Montefiore	412-647-9729		■	■	■*	■	■							1821007881	390164	3459 Fifth Ave.	Pittsburgh	PA	15213	
	UPMC Presbyterian	412-647-9729		■	■*	■*	■	■	■	■*	■				1821007881	390164	200 Lothrop St.	Pittsburgh	PA	15213	
	UPMC St. Margaret	412-647-9729	412-784-4268	■	■*	■	■	■	■	■	■				1790795359	390102	815 Freeport Road	Pittsburgh	PA	15215	
	UPMC Magee-Womens Imaging-UPMC St. Margaret	1-800-649-4077	412-605-0389					■	■					■	1952311508	390114	815 Freeport Road, Suite 2160	Pittsburgh	PA	15215	
	UPMC Mercy	412-647-9729		■	■	■	■	■	■	■	■				1881695146	63	1400 Locust St.	Pittsburgh	PA	15219	
	UPMC Children's Hospital of Pittsburgh	412-692-5500, Option 2	412-692-6933	■*	■	■	■	■	■	■	■	■	■		1164426896	393302	4401 Penn Ave.	Pittsburgh	PA	15224	
	UPMC Shadyside	412-647-9729	412-623-3107	■	■*	■*	■	■	■	■*	■				1821007881	390164	5230 Centre Ave.	Pittsburgh	PA	15232	
	UPMC Passavant-McCandless	412-647-9729	412-748-5484	■	■*	■	■	■	■	■*	■	■	■	■	1225047699	390107	9100 Babcock Blvd.	Pittsburgh	PA	15237	
	UPMC Washington	724-250-4300	724-223-2018	■	■	■*		■	■	■	■	■			1609984889	394697	155 Wilson Ave.	Washington	PA	15301	
	UPMC Greene	724-627-2393	724-627-2484	■	■	■		■	■	■				■	1225417421	1180142	350 Bonar Ave.	Waynesburg	PA	15370	
	Outpatient Locations																				
	UPMC Magee-Womens Imaging-Hampton	1-800-649-4077, Option 1	412-605-0389											■	1952311508	390114	UPMC Outpatient Center 4490 Mt. Royal Blvd., Suite 3100	Allison Park	PA	15101	
	UPMC Outpatient Center in Hampton Twp.	412-647-9729	412-219-0418	■				■						■	1225047699	390107	4490 Mount Royal Blvd.	Allison Park	PA	15101	
	UPMC Hillman Cancer Center at Heritage Valley Health System (Chippewa)	1-866-901-PETT (7388)	724-773-6936										■		1972567972	1556237	1000 Dutch Ridge Road	Beaver	PA	15009	
	UPMC Magee-Womens Imaging-Bethel Park	1-800-649-4077, Option 1	412-605-0389						■	■				■	1952311508	390114	1300 Oxford Drive, Suite 2100	Bethel Park	PA	15102	
	UPMC Outpatient Center in Bethel Park	412-647-9729	412-851-8888	■	■*		■	■	■						1821007881	390164	1300 Oxford Drive, Suite G300	Bethel Park	PA	15102	
	UPMC Rheumatology - Bethel Park	412-851-8860												■		1658157	2000 Oxford Drive, Suite 680	Bethel Park	PA	15102	
UPMC Children's South	412-692-5500, Option 2		■		■	■	■	■						1164426896	393302	205 Millers Run Road	Bridgeville	PA	15017		
UPMC Outpatient Center - Cecil	724-579-1436	724-579-1436	■				■	■						1609984889	1077099	3415 Millers Run Road	Cecil	PA	15321		
UPMC Outpatient Center in Coraopolis	412-269-4114, Option 5		■													1600 Coraopolis Heights Road, Suite G1	Coraopolis	PA	15108		
UPMC Lemieux Sports Complex	412-647-9729	724-720-3092 (Breast)	■				■							1821007881	390164	8000 Cranberry Springs Drive	Cranberry Township	PA	16066		
UPMC Magee-Womens Imaging-UPMC Lemieux Sports Complex	1-800-649-4077, Option 1	412-605-0389					■	■					■	1952311508	390114	8000 Cranberry Springs Drive, Suite 2M601A	Cranberry Township	PA	16066		
UPMC Magee-Womens Imaging-Green Tree	1-800-649-4077, Option 1	412-605-0389					■							1952311508	390114	969 Greentree Road	Green Tree	PA	15220		
UPMC Outpatient Center in Green Tree	412-920-0500		■											1881695146	63	969 Greentree Road	Green Tree	PA	15220		

■ Service available
■ Breast ultrasound

■ OB/GYN ultrasound
■ 3T MRI

■ 3D mammography/
breast tomosynthesis
■ Outpatient walk-in x-ray only

* Breast MRI available
* SPECT/CT available
* MRI prostate exam available
* Weight Bearing CT

* Open MRI
* Lung cancer screening available
* EOS imaging available

Same-day, evening, Saturday, and Sunday appointments are available. Please call the office to verify hours as they vary by location.

Southwest PA Continued

	LOCATION	PHONE	FAX	GENERAL DIAGNOSTICS	CT	MRI	MRI WIDE BORE	US	PERI. VASC.	NUC. MED.	IR/ VASC.	PET-CT	MAMMO.	DXA	NPI #	FACILITY ID	ADDRESS	CITY	STATE	ZIP	
Southwest PA	UPMC Outpatient Center in Greensburg	724-853-4559		■													410 Pellis Road Lower Level, Suite 1B	Greensburg	PA	15601	
	UPMC Greenville Medical Center	724-589-6681	724-588-8060	■											1225048838	390178	90 Shenango St.	Greenville	PA	16125	
	UPMC Specialty Care in Hermitage	724-983-8864	724-347-4654	■				■ ■ ■					■	■	1952311508	425122	875 North Hermitage Road	Hermitage	PA	16148	
	IRMC Cancer Center	724-465-8900										■			1518950674	229400	850 Hospital Road	Indiana	PA	15701	
	UPMC Magee-Womens Imaging-Harrison City	1-800-649-4077, Option 1	412-605-0389					■					■	■			3520 Route 130	Irwin	PA	15642	
	UPMC Magee-Womens Imaging-UPMC McKeesport	1-800-649-4077, Option 1	412-605-0389					■ ■					■	■	1952311508	390114	1500 Fifth Ave., Level A	McKeesport	PA	15132	
	UPMC Outpatient Center - Peters Twp.	724-942-6460	724-942-6462	■	■	■ *		■ ■					■	■	1609984889	387065	4198 Washington Road	McMurray	PA	15317	
	UPMC Horizon Diagnostic Center-Mercer	724-662-6665	724-662-0285	■											1225048838	390178	737 Greenville Road, Suite 2	Mercer	PA	16137	
	UPMC Children's East	412-692-5500, Option 2		■				■							1164426896	393302	Corporate One Office Park, 4055 Monroeville Blvd.	Monroeville	PA	15146	
	UPMC Magee-Womens Imaging-Monroeville	1-800-649-4077, Option 1	412-605-0389					■ ■						■	■	1952311508	390114	Corporate One Office Park, 4075 Monroeville Blvd., Bldg. II Breast Imaging -Suite 225 OB Ultrasound -Suite 405	Monroeville	PA	15146
	UPMC Monroeville Imaging Center	412-647-9729	412-858-0300	■	■ *	■	■	■ ■ ■ (GYN only)	■				■			1821007881	390164	600 Oxford Drive	Monroeville	PA	15146
	UPMC Hillman Cancer Center, Natrona Heights	724-230-3080	724-230-3004										■			1912961350	1347736	1604 Burtner Road	Natrona Heights	PA	15065
	UPMC Outpatient Center in Natrona Heights	412-647-9729		■	■ *	■		■					■			1790795359	390102	1604 Burtner Road	Natrona Heights	PA	15065
	UPMC Magee-Womens Imaging-Natrona Heights	1-800-649-4077, Option 1	412-605-0389					■								1952311508	390114	1800 Union Ave., Suite B	Natrona Heights	PA	15065
	UPMC Jameson College Fields MRI and Diagnostic Imaging	724-656-4220		■	■	■	■	■						■		1477538312		130 Enclave Drive	New Castle	PA	16105
	UPMC Magee-Womens Imaging-UPMC Jameson	1-800-649-4077, Option 1	412-605-0389					■ ■						■		1477538312		26 Nesbitt Road, Suite 300	New Castle	PA	16105
	UPMC Outpatient Center at Westgate Plaza	724-698-1694		■												1477538312		2004 West State St.	New Castle	PA	16101
	UPMC Outpatient Center in Pittsburgh's South Side	412-232-7921		■												1881695416	63	2310 Jane St.	Pittsburgh	PA	15203
	UPMC Rooney Sports Complex	412-647-9729		■		■	■									1821007881	390164	3200 South Water St.	Pittsburgh	PA	15203
	Osteoporosis Prevention and Treatment Center-UPMC Montefiore	412-692-2472												■			1510022	3459 Fifth Ave., 4 East	Pittsburgh	PA	15213
	UPMC Falk Registration and Diagnostic Testing	412-647-9729		■				■								1821007881	390164	3601 Fifth Ave., Suite 207	Pittsburgh	PA	15213
	UPMC Cardiovascular Magnetic Resonance Center	412-647-6000					■										27752	200 Lothrop St.	Pittsburgh	PA	15213
	UPMC Rheumatology-UPMC St. Margaret	412-784-1466													■		1658157	Doris Palmer Arthritis Center, 200 Delafield Road, Suite 4040	Pittsburgh	PA	15215
	UPMC Magee-Womens Imaging-UPMC Mercy	1-800-649-4077, Option 1	412-605-0389					■								1881695146	63	1400 Locust St., Suite 5108	Pittsburgh	PA	15219
	UPMC Imaging Services at UPMC Hillman Cancer Center, Shadyside	412-623-4800	412-623-4810	■	■ *	■ *		■		■			■	■	■	1821007881	390164	5115 Centre Ave.	Pittsburgh	PA	15232
	UPMC Magee-Womens Imaging-UPMC Hillman Cancer Center	1-800-649-4077, Option 1	412-605-0389					■						■	■	1952311508	390114	5115 Centre Ave., Suite 140	Pittsburgh	PA	15232
	UPMC Magee-Womens Imaging-UPMC Passavant (McCandless)	1-800-649-4077, Option 1	412-605-0389					■ ■						■	■	1952311508	390114	9100 Babcock Blvd.	Pittsburgh	PA	15237
	UPMC/St. Clair Hospital Cancer Center	412-942-7075	412-942-3277										■			1699708792	1759108	1020 Bower Hill Road	Pittsburgh	PA	15243
	UPMC Primary & Specialty Care	412-749-3205		■														111 Hazel Lane, Suite 200	Sewickley	PA	15143
	UPMC Children's North	412-692-5500, Option 2		■				■								1164426896	393302	2599 Wexford Bayne Road	Sewickley	PA	15143
UPMC Magee-Womens Imaging-Wexford	1-800-649-4077, Option 1	412-605-0389					■ ■						■	■	1952311508	390114	2599 Wexford Bayne Road, Suite 1000A	Sewickley	PA	15143	
Uniontown Hospital Radiation Oncology in partnership with UPMC Hillman Cancer Center	724-437-2503	724-437-8846										■			1700840154	1564200	51 Brewer Drive	Uniontown	PA	15401	
Washington Health System Radiation Oncology in partnership with UPMC Hillman Cancer Center	724-229-2076	724-229-2187										■			1851476717	1899775	155 Wilson Ave.	Washington	PA	15301	
UPMC Outpatient Center - Neighbor Health	724-223-3750	724-229-2191	■				■								1609984889	383007	95 Leonard Ave.	Washington	PA	15301	
UPMC Outpatient Center - Meadows Landing	724-223-3313	724-250-6023					■ ■						■	■	1609984889	1148811	80 Landings Drive	Washington	PA	15301	

- Service available
 - OB/GYN ultrasound
 - 3D mammography/
breast tomosynthesis
 - Outpatient walk-in x-ray only
 - Breast ultrasound
 - 3T MRI
 - Breast MRI available
 - SPECT/CT available
 - MRI prostate exam available
 - Weight Bearing CT
 - Open MRI
 - Lung cancer screening available
 - EOS imaging available
- Same-day, evening, Saturday, and Sunday appointments are available.**
Please call the office to verify hours as they vary by location.

Southwest PA/Northwest PA and Western New York/West Central PA, Maryland, and West Virginia

	LOCATION	PHONE	FAX	GENERAL DIAGNOSTICS	CT	MRI	MRI WIDE BORE	US	PERI. VASC.	NUC. MED.	IR/ VASC.	PET-CT	MAMMO.	DXA	NPI #	FACILITY ID	ADDRESS	CITY	STATE	ZIP	
Southwest PA	UPMC Outpatient Center - Greene County	724-852-7559	724-852-7556	■				■ ■							1609984889	394472	343 E. Roy Furman Highway	Waynesburg	PA	15370	
	UPMC Magee-Womens Imaging-West Mifflin	1-800-649-4077 Option 1	412-605-0389					■ ■					■	■	1952311508	390114	UPMC Outpatient Center 275 Clairton Blvd., Suite 600	West Mifflin	PA	15236	
	UPMC Outpatient Center on Clairton Boulevard	412-647-9729	412-650-2869	■	■ *			■ **	■	■					1952311508	390114	UPMC Outpatient Center, 275 Clairton Blvd., Suite 400	West Mifflin	PA	15236	
	UPMC Outpatient Center on Lebanon Church Road	412-653-8030	412-653-8031	■											1821007881	390164	1907 Lebanon Church Road, Suite 100	West Mifflin	PA	15122	
	UPMC Outpatient Center in Wexford	412-647-9729	724-720-4536	■				■							1225047699	390107	12680 Perry Highway	Wexford	PA	15090	
	Tri Rivers Musculoskeletal Centers	1-866-874-7483																7500 Brooktree Road	Wexford	PA	15090
	UPMC Primary Care in White Oak	412-267-5969			■										1194734798	390008	2001 Lincoln Way	White Oak	PA	15131	
Hospitals																					
Northwest PA and Western New York	UPMC Hamot	814-877-6123		■	■ *	■ **	■	■		■	■				1487647590	71	201 State St.	Erie	PA	16550	
	UPMC Chautauqua, New York	716-487-0141	716-485-7493	■	■ *	■	■	■ ■ ■		■	■	■	■	■	1770573222	330239	207 Foote Ave.	Jamestown	NY	14701	
	UPMC Kane	814-837-4580	814-837-4567	■	■	■ *		■ ■ ■		■		■	■	■	1861478307	390104	4372 Route 6	Kane	PA	16735	
	UPMC Northwest	1-800-462-8813		■	■ *	■ *	■	■	■	■	■		■	■	1619069440	390091	100 Fairfield Drive	Seneca	PA	16346	
Outpatient Locations																					
West Central PA, Maryland, and West Virginia	Greater Pittsburgh OB/GYN	724-285-9200	724-431-0258					■									901 E. Brady St.	Butler	PA	16001	
	UPMC Magee-Womens Specialty Services-UPMC Northwest (Clarion)	814-223-9280						■					■		1619069440	390091	Cricklewood Center 1008 South Fifth Ave., Suite 203	Clarion	PA	16214	
	UPMC Hillman Cancer Center at Heritage Valley Health System (Ellwood City)	1-866-901-PETT (7388)	724-773-6936										■		1184210437	1556237	271 State Route 288	Ellwood City	PA	16117	
	UPMC Hillman Cancer Center, Erie	814-835-9751		■	■								■		1174520654	25-1403958	2500 West 12th St.	Erie	PA	16505	
	UPMC Magee-Womens Specialty Services-UPMC Hamot	814-877-6123						■					■		1952311508	71	5050 West Ridge Road	Erie	PA	16506	
	UPMC Magee-Womens Specialty Services-UPMC Hamot	814-877-6123						■							1952311508	71	118 East 2nd St., Suite 1340	Erie	PA	16507	
	UPMC Hamot Breast Imaging	814-877-6123						■					■		1487647590	71	300 State St., Suite 108	Erie	PA	16507	
West Virginia	UPMC Outpatient Center at Sterling Square	814-877-6123		■	■	■ *		■					■	■	1487647590	71	3406 Peach St.	Erie	PA	16508	
	UPMC Urgent Care South	814-860-3301		■											1487647590	71	7200 Peach St., Suite 16	Erie	PA	16508	
	UPMC Magee-Womens Specialty Services-UPMC Northwest (Franklin)	814-432-3163						■					■		1619069440	390091	1310 Liberty St.	Franklin	PA	16323	
	UPMC Northwest Center-Reno	1-800-462-8813											■		1619069440	390091	1671 Allegheny Blvd.	Reno	PA	16343	
Hospitals and Outpatient Locations																					
West Central PA, Maryland, and West Virginia	Johnson Heights Diagnostic Center	240-964-4205		■													625 Kent Ave.	Cumberland	MD	21502	
	UPMC Western Maryland	240-964-8888 240-964-3735 (IR) 240-964-1153 (Breast)	240-964-1100	■	■ *		■ *	■ ■ ■	■	■	■	■	■	■	1609831247	238742	12500 Willowbrook Road	Cumberland	MD	21502	
	UPMC Western Maryland-Outpatient Diagnostic Center	240-964-8888	240-964-1100	■	■ *	■		■					■	■	1578898631	183111	12400 Willowbrook Road, First Floor	Cumberland	MD	21502	
	UPMC Altoona	814-889-4222	814-889-7777	■	■	■	■	■ ■		■	■				1649278730	390073	620 Howard Ave.	Altoona	PA	16601	
	UPMC Altoona Station Medical Center	814-889-4222		■	■ *	■ *	■	■ ■				■	■	■	1649278730	390073	1516 9th Ave.	Altoona	PA	16602	
	UPMC Outpatient Center in Ebensburg	814-889-4222	814-472-9436	■				■						■	1649278730	390073	152 Zeman Drive	Ebensburg	PA	15931	
	UPMC Bedford	814-623-3797	814-623-3586 814-623-3709 (CT) 814-623-3763 (MRI)	■	■	■		■ ■	■	■				■	■	1295724193	390117	10455 Lincoln Highway	Everett	PA	15537
	UPMC Outpatient Center in Hollidaysburg	814-889-4222	814-946-8670	■											1649278730		800 S. Logan Blvd.	Hollidaysburg	PA	16648	
	UPMC Hillman Cancer Center at John P. Murtha Pavilion	814-533-0106											■		1700185188	232301	337 Somerset St.	Johnstown	PA	15901	
	UPMC Somerset	814-443-5096		■	■ *	■		■ ■	■	■			■	■	1912900168	196901	225 S. Center Ave.	Somerset	PA	15501	
	UPMC Outpatient Center in Ridgeley, WV	304-726-4501		■													11 Hunt Club Drive	Ridgeley	WV	26753	

■ Service available
■ Breast ultrasound

■ OB/GYN ultrasound
■ 3T MRI

■ 3D mammography/
breast tomosynthesis
■ Outpatient walk-in x-ray only

* Breast MRI available
■ SPECT/CT available
* MRI prostate exam available
* Weight Bearing CT

* Open MRI
* Lung cancer screening available
* EOS imaging available

Same-day, evening, Saturday, and Sunday appointments are available.
Please call the office to verify hours as they vary by location.

Central PA

	LOCATION	PHONE	FAX	GENERAL DIAGNOSTICS	CT	MRI	MRI WIDE BORE	US	PERI. VASC.	NUC. MED.	IR/ VASC.	PET-CT	MAMMO.	DXA	NPI #	FACILITY ID	ADDRESS	CITY	STATE	ZIP	
Central PA	Hospitals																				
	UPMC Carlisle	717-230-3700 1-866-748-2447 (IR)	717-960-3298 717-960-3698 (CT) 717-960-3477 (Mammo) 717-960-3318 (Nuc. Med.) 717-960-3325 (IR)	■	■*		■	■ ■ ■	■	■	■	■	■*	■*		1538693825	390058	361 Alexander Spring Road	Carlisle	PA	17015
	UPMC Hanover	717-230-3700 1-866-748-2447 (IR)		■	■*	■*	■	■ ■ ■		■*	■	■	■*	■*		1730158981	390233	300 Highland Ave.	Hanover	PA	17331
	UPMC Harrisburg	717-230-3700 1-866-748-2447 (IR)		■	■*	■	■	■ ■		■*	■		■			1407813603	390067	111 S. Front St.	Harrisburg	PA	17101
	UPMC Community Osteopathic	717-230-3700 1-866-748-2447 (IR)		■	■*			■ ■	■	■	■					1407813603	390067	4300 Londonderry Road	Harrisburg	PA	17109
	UPMC Lititz	717-230-3700 1-866-748-2447 (IR)		■	■*	■*		■ ■ ■	■	■	■	■	■*	■*		1285167916	390068	1500 Highlands Drive	Lititz	PA	17543
	UPMC West Shore	717-230-3700 1-866-748-2447 (IR)		■	■	■	■	■ ■		■*	■					1407813603	390067	1995 Technology Drive	Mechanicsburg	PA	17050
	UPMC Memorial	717-230-3700		■	■*	■*	■	■ ■	■	■*	■					1063945707	390101	1701 Innovation Drive	York	PA	17408
	Outpatient Centers-Greater Harrisburg																				
	UPMC Imaging Services, Camp Hill	717-230-3700		■	■*	■*	■	■ ■ ■	■	■				■	■	1407813603	390067	240 Grandview Ave.	Camp Hill	PA	17011
	UPMC Imaging Services, Erford Road	717-230-3700			■													100 Corporate Center Drive, Suite 100	Camp Hill	PA	17011
	UPMC Imaging Services, Dillsburg	717-230-3700		■	■*	■		■ ■	■					■		1407813603	390067	1 Trinity Drive East, Suite 130	Dillsburg	PA	17019
	UPMC Community Osteopathic Medical Sciences Pavilion	717-230-3700		■	■*	■	■*	■ ■ ■	■			■	■*	■		1407813603	390067	4300 Londonderry Road	Harrisburg	PA	17109
	UPMC Imaging Services at Polyclinic	717-230-3700		■												1407813603	390067	2501 North Third St.	Harrisburg	PA	17110
	UPMC Imaging Services, Harrisburg	717-230-3700		■	■*	■*	■	■ ■	■	■				■	■	1407813603	390067	2808 Old Post Road	Harrisburg	PA	17110
	UPMC Imaging Services, Harrisburg	717-230-3700		■	■*	■	■	■ ■ ■	■	■			■	■*	■	1407813603	390067	4518 Union Deposit Road	Harrisburg	PA	17111
	UPMC Imaging Services, Hershey	717-230-3700		■	■*	■	■	■ ■ ■	■					■	■	1407813603	390067	32 Northeast Drive	Hershey	PA	17033
	UPMC Imaging Services, Lemoyne	717-230-3700		■	■*	■	■							■		1407813603	390067	110 Lowther St.	Lemoyne	PA	17043
	UPMC Medical Office Building	717-230-3700		■	■	■*	■	■ ■ ■	■			■	■*	■		1407813603	390067	2015 Technology Parkway	Mechanicsburg	PA	17050
	UPMC Outpatient Center in Mechanicsburg	717-230-3700		■												1407813603	390067	21 Waterford Drive	Mechanicsburg	PA	17050
	UPMC Imaging Services, Middletown	717-230-3700		■										■		1407813603	390067	1025 West Harrisburg Pike	Middletown	PA	17057
	UPMC Imaging, Millersburg	717-230-3700		■	■*			■ ■	■					■	■	1407813603	390067	1000 Evelyn Drive	Millersburg	PA	17061
	Medical Professional Center of Newport	717-230-3700		■	■*	■	■	■ ■	■	■*				■	■	1407813603	390067	300 Bretz Court	Newport	PA	17074
	Outpatient Centers-Carlisle																				
	UPMC Imaging Services, Walnut Bottom	717-230-3700	717-245-0180	■	■*	■	■	■ ■	■						■	1689101328	390058	850 Walnut Bottom Road	Carlisle	PA	17013
	UPMC Imaging Services, Shippensburg	717-530-1845	717-530-1502	■												1689107328		127 Walnut Bottom Drive	Shippensburg	PA	17257
	Outpatient Centers-Hanover																				
	UPMC Imaging Services, Hanover	717-316-2200, Option 1		■	■*	■	■	■ ■						■	■	1730158981	390233	250 Fame Ave., Suite 104	Hanover	PA	17331
	UPMC Outpatient Center in Hanover	717-316-2200, Option 1		■	■	■		■ ■						■	■	1730158981	390233	2201 Brunswick Drive, Suite 1100	Hanover	PA	17331
	UPMC Imaging Services, New Oxford	717-316-2200, Option 1		■												1730158981	390233	5615 York Road	New Oxford	PA	17350
	UPMC Imaging Services, Thistle Hill	717-316-2200, Option 1		■												1730158981	390233	2030 Thistle Hill Drive, Suite 101	Spring Grove	PA	17362

■ Service available
■ Breast ultrasound

■ OB/GYN ultrasound
■ 3T MRI

■ 3D mammography/
breast tomosynthesis
■ Outpatient walk-in x-ray only

■ Breast MRI available
■ SPECT/CT available
■ MRI prostate exam available
■ Weight Bearing CT

■ Open MRI
■ Lung cancer screening available
■ EOS imaging available

Same-day, evening, Saturday, and Sunday appointments are available.
Please call the office to verify hours as they vary by location.

NOTE: Interventional radiology (IR) services in Central PA are not shown in this directory because IR is part of the cardiology service line in this region. IR is provided at UPMC Harrisburg, UPMC Community Osteopathic, UPMC West Shore, UPMC Carlisle, UPMC Lititz, UPMC Memorial, and UPMC Hanover.

Central PA Continued / North Central PA

	LOCATION	PHONE	FAX	GENERAL DIAGNOSTICS	CT	MRI	MRI WIDE BORE	US	PERI. VASC.	NUC. MED.	IR/ VASC.	PET-CT	MAMMO.	DXA	NPI #	FACILITY ID	ADDRESS	CITY	STATE	ZIP
Central PA	Outpatient Centers-Lancaster																			
	UPMC Outpatient Center	717-230-3700		■	■*	■	■	■ ■	■	■*			■	■	1083147656	390068	1251 E. Main St.	Annville	PA	17003
	Breast Health Center	717-625-5555		■				■					■		1083147656	390068	2170 Noll Drive, Suite 200	Lancaster	PA	17603
	UPMC Imaging Services, Manheim Pike	717-625-5555		■	■*	■	■	■ ■	■						1083147656	390068	1160 Manheim Pike, Suite 101	Lancaster	PA	17601
	Outpatient Centers-York																			
	UPMC Outpatient Center			■									■		1063945707	390101	2860 Whiteford Road	York	PA	17402
	UPMC Imaging Services, York	717-815-2351		■											1063945707	390101	520 Greenbriar Road	York	PA	17404
Outpatient Center at UPMC Memorial York (ACB)	717-815-2351		■	■*	■*	■	■ ■ ■	■				■	■	1063945707	390101	1703 Innovation Drive	York	PA	17408	
North Central PA	Hospitals and Outpatient Locations																			
	UPMC Cole	1-877-274-8200 814-260-5265 (MRI only)		■	■*	■*		■ ■ ■		■		■	■	■	1831322627	391313	1001 E. Second St.	Coudersport	PA	16915
	Emporium Health Center	814-486-0810		■													288 Sizerville Road	Emporium	PA	15834
	UPMC Outpatient Center in Lock Haven	570-893-5501		■	■		■	■ ■		■			■	■	1841712882	390084	24 Cree Drive	Lock Haven	PA	17745
	UPMC Outpatient Center in McElhattan	570-769-1300		■													1 Outlet Drive, Suite 400	Lock Haven	PA	17748
	UPMC Outpatient Center in Mansfield	570-662-1900		■											1639520760		416 South Main St.	Mansfield	PA	16933
	UPMC Outpatient Center in Montoursville	570-321-2545		■	■*			■ ■							1740365097	390045	900 Broad St.	Montoursville	PA	17754
	UPMC Muncy	570-321-2545 570-321-2400 (Nuc. Med. only)		■	■*		■	■ ■		■			■		1912082272	391301	215 East Water St.	Muncy	PA	17756
	Port Allegany Community Health Center	814-642-2505		■				■									45 Pine St.	Port Allegany	PA	16743
	Shinglehouse Community Health Center	814-260-9352		■													129 Puritan Ave.	Shinglehouse	PA	16748
	UPMC Wellsboro	570-723-0165 or 570-723-0160		■	■*	■		■ ■ ■		■			■	■	1427501766	390043	32-36 Central Ave.	Wellsboro	PA	16901
	UPMC Orthopaedic Care-Wellsboro	570-723-0680		■													11 Water St.	Wellsboro	PA	16901
	Susquehanna MRI	570-321-2545				■**	■*								1740365097	394048	1112 Grampian Blvd.	Williamsport	PA	17701
	UPMC Williamsport Divine Providence Campus	570-321-2545		■				■					■	■	1861576993		1100 Grampian Blvd.	Williamsport	PA	17701
	UPMC Williamsport	570-321-2545 570-321-2400 (Nuc. Med. & PET-CT only) 570-321-2800 (IR)		■	■*	■ ■ ■**	■*	■ ■		■*	■	■	■		1740365097	390045	700 High St.	Williamsport	PA	17701

■ Service available
■ Breast ultrasound

■ OB/GYN ultrasound
■ 3T MRI

■ 3D mammography/
breast tomosynthesis
■ Outpatient walk-in x-ray only

* Breast MRI available
* SPECT/CT available
* MRI prostate exam available
* Weight Bearing CT

* Open MRI
* Lung cancer screening available
* EOS imaging available

Same-day, evening, Saturday, and Sunday appointments are available.
Please call the office to verify hours as they vary by location.

