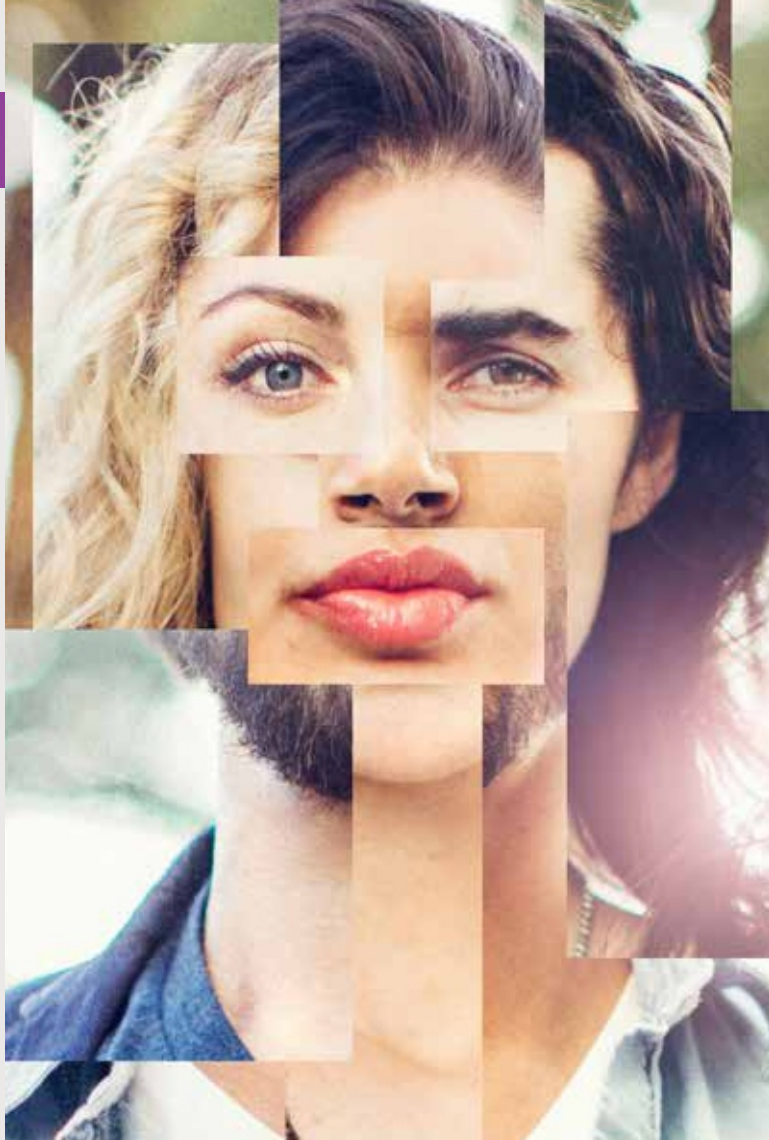


Getting to Know You

At UPMC, we have a wonderfully diverse patient population. Our goal is to make sure all patients are treated with dignity and respect and have their individual needs met while feeling safe and accepted during their care.

A routine part of every 'history and physical' is your sexual orientation and gender identity (SOGI). We are working to do a better job of asking and maintaining this information for all patients because it is an important part of everyone's medical care and can impact medical decisions. It helps to create care that is personalized, relevant, and sensitive to your needs.

Our outpatient electronic health record has been updated to include areas for your chosen name, sexual orientation and gender identity. All patients are asked for this information so that we can better understand your clinical care needs and can deliver the high-quality care all patients expect and deserve.



At UPMC, we treat all individuals with dignity and respect, which are part of our core values. We are committed to providing the best care for every patient, the right way, every time. All are welcome here.



UPMC
200 Lothrop St.
Pittsburgh, PA 15213
UPMC.com



Sexual Orientation and Gender Identity (SOGI)

The more we know you, the better we can care for you.



UPMC policy prohibits discrimination or harassment on the basis of race, color, religion, ancestry, national origin, age, sex, genetics, sexual orientation, gender identity, marital status, familial status, disability, veteran status, or any other legally protected group status. Further, UPMC will continue to support and promote equal employment opportunity, human dignity, and racial, ethnic, and cultural diversity. This policy applies to admissions, employment, and access to and treatment in UPMC programs and activities. This commitment is made by UPMC in accordance with federal, state, and/or local laws and regulations.

To Reorder Use Form # UPMC-2803 PATEX_BSW/DL 07/21

© 2021 UPMC



Questions We Will Ask

What is your sexual orientation?

Sexual orientation describes a person's physical and emotional attraction to others. Some examples include heterosexual (straight), gay, lesbian, and bisexual.

What is your gender identity?

Gender identity describes a person's inner sense of gender. A person may think of themselves as male, female, a combination of both, neither, or as another gender. Some examples include cisgender, transgender, genderqueer and non-binary.

What is your chosen name?

Your chosen name is the name that you want your health care providers and staff to call you, regardless of your legal name. Your chosen name will be used to address you during your visit in the outpatient setting. This can be as simple as your given name is Jonathan Smith Jr., and you want to be called John, or Junior. It can also be a totally different name.

What pronouns do you use?

Using the correct personal pronouns is a way to respect you and create an inclusive environment, just as using your name can be a way to show respect. We want to know if you use pronouns like they/them, she/her, he/him, or something else.

How We Will Collect and Use This Information

To ensure your privacy, your provider will ask you for this information in the privacy of the exam room or their office. At future visits, front desk staff will be able to greet you with your chosen name and only clinical providers who need to know your sexual orientation and gender identity will have that information.

The information will initially be available to providers and staff across the UPMC doctor network. We are committed to our goal of having your preferred information available across all our Electronic Health Records (EHRs). While we work toward that, your information may not be available when receiving care in some parts of UPMC, such as while in the hospital or at the Hillman Cancer Centers.

Frequently Asked Questions (FAQs)

Who will see the information I provide about my sexual orientation, gender identity and chosen name?

At UPMC, confidentiality is always a top priority. There are laws as well as our own policies in place to protect your privacy. Only care providers and other clinical staff can see your sexual orientation and gender identity as part of your outpatient medical record.

If you have granted proxy access to your medical record, your loved one will be able to see this information as part of your medical record. Front desk staff and other support staff will be able to see your chosen name so that they can address you as you prefer.

Only your legal name and sex will be shared with 3rd party agencies such as your insurance.

Do I have to share this information?

You are encouraged to share this information, but you are not required to do so. You may answer the questions, or you may say, "I prefer not to answer." You can provide whatever information you feel comfortable sharing with us.

Can I update or add this information in MyUPMC?

Yes, you can add or update your sexual orientation and gender identity information on **MyUPMC.com**. Tell us more about yourself by clicking **Health Summary** and selecting **Health Resources**.

More resources about sexual orientation and gender identity:

- UPMC Lesbian, Gay, Bisexual, Transgender, and Questioning (LGBTQ) resources at [UPMC.com/LGBTQ](https://www.upmc.com/LGBTQ)
- Resources for Youth at
> [CHP.edu/LGBTQ](https://www.chp.edu/LGBTQ)
> [advocatesforyouth.org](https://www.advocatesforyouth.org)
- The Human Rights Campaign's (HRC) Glossary of Terms at [hrc.org/resources/glossary-of-terms](https://www.hrc.org/resources/glossary-of-terms)
- The National LGBTQIA+ Health Education Center at [lgbtqiahealtheducation.org](https://www.lgbtqiahealtheducation.org)
- HRC's Health Equality Index at [hrc.org/hei](https://www.hrc.org/hei)

For LGBTQ-related concerns, please email LGBTQHealth@upmc.edu