

UPMC Magee-Womens Health Services in Your Community.

Bringing the best in women's health care to Monroeville,
McKeesport, Greensburg, and neighboring communities.



UPMC policy prohibits discrimination or harassment on the basis of race, color, religion, ancestry, national origin, age, sex, genetics, sexual orientation, gender identity, marital status, familial status, disability, veteran status, or any other legally protected group status. Further, UPMC will continue to support and promote equal employment opportunity, human dignity, and racial, ethnic, and cultural diversity. This policy applies to admissions, employment, and access to and treatment in UPMC programs and activities. This commitment is made by UPMC in accordance with federal, state, and/or local laws and regulations.

KM/CD 4898 © 2022 UPMC GH/OCT22

UPMC LIFE
CHANGING
MEDICINE



A Message to You

In our region, we are fortunate to have UPMC Magee-Womens Hospital – a National Center of Excellence in Women’s Health and nationally ranked by U.S. News & World Report for excellence in obstetrics and gynecology. And, thanks to the partnership with UPMC East and UPMC McKeesport, women of all ages in Monroeville, McKeesport, Greensburg, and surrounding communities now can enjoy even greater access to Magee-Womens’ trusted expertise.

From annual checkups and preventive care to testing, diagnosis, state-of-the-art surgery, and advanced treatments, UPMC offers you the best in women’s health care — close to your home or workplace. Our specialists will work collaboratively with your primary care doctor or specialist to provide seamless, individualized treatment.

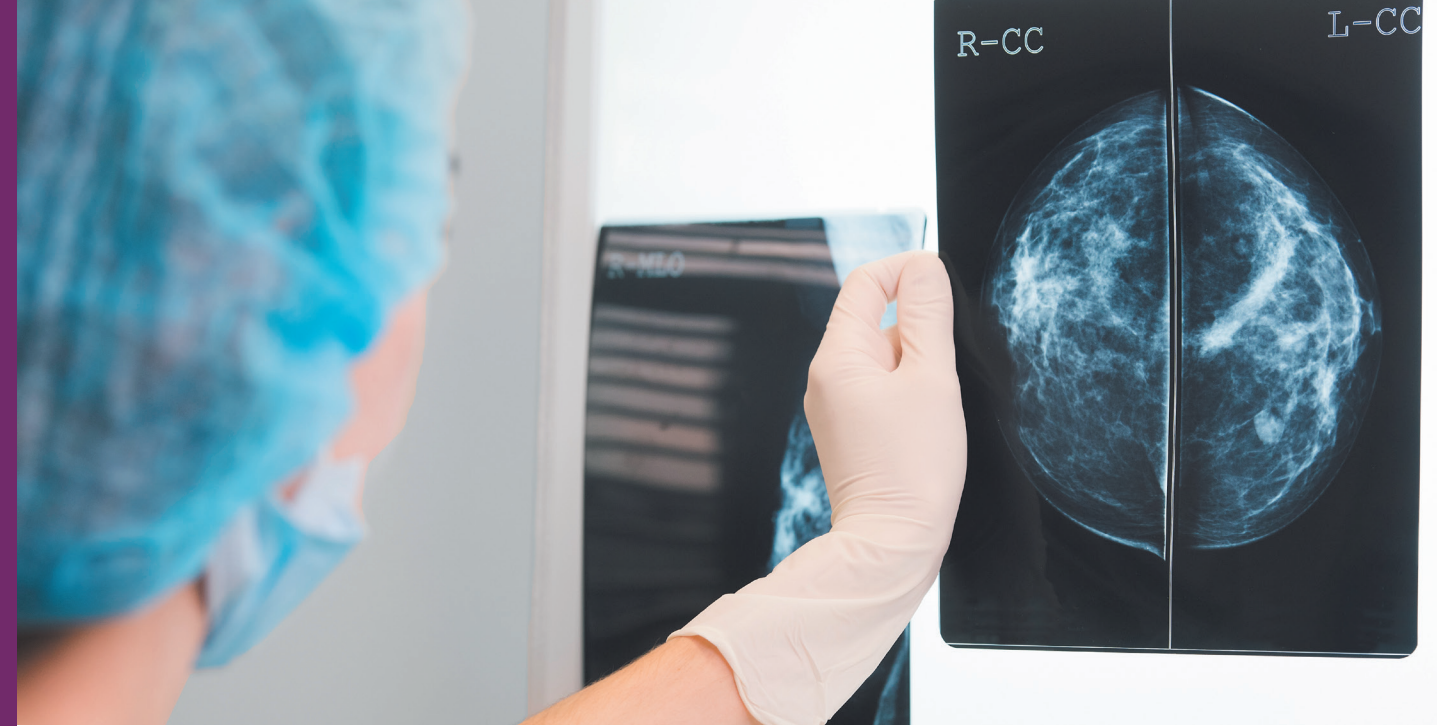
Whether you’re an adolescent preparing for your first gynecological examination, a mother-to-be readying for childbirth, or a midlife woman going through menopause, you’ll find expert, high-quality medical care focused on your unique needs during this special time of your life.

Richard Beigi, MD
President
UPMC Magee-Womens
Hospital

Mark O’Hern
President
UPMC East
UPMC McKeesport

UPMC Magee-Womens health services in the area include:

- Breast surgery
- General obstetrics and gynecology
- Minimally invasive gynecologic surgery
- Urogynecology services
- Women’s cancer care in partnership with UPMC Hillman Cancer Center
- Women’s imaging services



Women’s Imaging Services

Residents of Monroeville, McKeesport, and Westmoreland County communities have easy access to state-of-the-art specialized women’s imaging services conveniently offered at:

- UPMC Magee-Womens Imaging (Monroeville)
- UPMC Magee-Womens Imaging (Harrison City)
- UPMC Magee-Womens Imaging (UPMC McKeesport)

Specialized imaging services available at our Monroeville locations include:

- 3D Mammography (Tomosynthesis) — *Screening and Diagnostic*
- Bone Densitometry (DXA)
- Breast Ultrasound
- OB-GYN Ultrasound Services
- Radioactive Seed Localization (RSL)
- Ultrasound-guided and Stereotactic-guided Breast Biopsies

Specialized imaging services available at our McKeesport location include:

- 3D Mammography (Tomosynthesis) — *Screening and Diagnostic*
- Bone Densitometry (DXA)
- Breast Ultrasound
- OB-GYN Ultrasound Services
- Radioactive Seed Localization (RSL)
- Ultrasound-guided Breast Biopsies

Specialized imaging services at our new Harrison City location include:

- 3D Mammography (Tomosynthesis) — *Screening and Diagnostic*
- Bone Densitometry (DXA)
- Breast Ultrasound
- OB-GYN Ultrasound Services
- Ultrasound-guided and Stereotactic-guided Breast Biopsies



Denise Chough, MD

“With the latest equipment and our highly trained staff, we strive to detect breast cancer at its earliest and most treatable stage.”

*- Denise Chough, MD
Associate Clinical Professor of Radiology
UPMC Magee-Womens*

Breast Surgery in Your Community



Emilia Diego, MD

“Our breast program is focused on providing individualized care for patients with benign and malignant breast problems. We strive to deliver cutting-edge care by using the latest surgical techniques and offering access to a comprehensive, multidisciplinary team.”

*- Emilia Diego, MD
Co-Director
UPMC Breast Cancer Program*

Together, UPMC Hillman Cancer Center and UPMC Magee-Womens have played a leading role in many of the dramatic advancements in the diagnosis and treatment of breast cancer. Women now have access to innovative, less invasive breast surgery options that can mean less scarring, faster healing time, and better cosmetic results.

When you are referred to the breast surgery program, you'll undergo an initial evaluation, including a physical examination and complete clinical breast exam. If you require additional treatment, our nationally recognized, board-certified breast surgeons and multidisciplinary team of doctors will work with you to develop a comprehensive, personalized plan of care.

Breast Surgery Options for Women

Breast surgery options available across the region include:

- Breast biopsy — removal of a breast tissue sample to test for cancer
- Lumpectomy — surgical removal of a portion of the breast to remove a known cancer
- Oncoplastic surgery — reshaping of the breast after a lumpectomy or partial mastectomy
- Sentinel lymph node biopsy — removal of the main (sentinel) lymph nodes in the underarm (axilla) to test for cancer
- Axillary lymph node dissection — removal of all or a group of lymph nodes in the underarm (axilla)

General Obstetrics and Gynecology



Robert Edwards, MD

“The region’s leading provider of women’s health services, UPMC Magee-Womens, is a world-class center for both women’s health and comprehensive medical and surgical services.”

*- Robert Edwards, MD
Professor and Chair, Department of Obstetrics, Gynecology, and Reproductive Sciences
UPMC Magee-Womens*

For more than a century, UPMC Magee-Womens has been the name to trust in women’s health. From yearly checkups and specialized care to the testing, diagnosis, and advanced treatment of complex and difficult cases, our board-certified doctors, experienced nurses, and skilled support staff can meet your specific needs at every stage of life.

Having Magee-Womens expertise and technology available in the Monroeville, McKeesport, and Greensburg areas makes it easier, more convenient, and more manageable for you to get this state-of-the-art care.

As one of the nation’s leading hospitals specializing in women’s health, Magee-Womens combines a wealth of specialty services with a traditional focus on obstetrics and gynecology. They are also recognized as a National Center of Excellence in Women’s Health by the U.S. Department of Health and Human Services.



Minimally Invasive Gynecologic Surgery

If you have a gynecologic condition that requires an operation, minimally invasive surgery may be the right option for you. Compared to traditional procedures, minimally invasive surgery is generally preferred because patients usually return to work sooner, experience less pain after surgery, have less scar tissue formation, and have smaller skin incisions.

Our highly trained surgeons use the latest laparoscopic and hysteroscopic technologies to treat a wide range of gynecologic conditions, including complex and difficult-to-treat cases, such as:

- Abnormal bleeding (heavy periods)
- Endometriosis
- Fibroid tumors
- Incontinence
- Infertility
- Ovarian cysts
- Pelvic organ prolapse
- Pelvic pain

Same-Day Hysterectomy

Our use of state-of-the-art technology means that the services provided by UPMC Magee-Womens can offer women same-day laparoscopic hysterectomy as a minimally invasive procedure at UPMC East and UPMC McKeesport.

With an outpatient hysterectomy, our surgeons make just four quarter-inch size incisions in the abdomen. This allows you to go home the same day, with a typical recovery time of two weeks. Traditional surgery involves two large incisions, with an average six-week recovery time for most patients.

Minimally invasive gynecologic surgery is offered by specialized surgeons within the following practices:

- Monroeville: UPMC Womancare Associates
- Irwin: UPMC Womancare Associates
- McKeesport: University NIA Ob-Gyn Associates



Urogynecology Services

Women of all ages can experience bladder and pelvic floor disorders, including problems with bladder and bowel control. Although such problems are more common with advancing age, even young women can be affected.

Childbirth, heavy lifting, the effects of menopause and aging, and some chronic medical and neurologic conditions can weaken the pelvic floor, causing leakage of urine or stool, difficulty with bowel movements, and pelvic pain or pressure. Discomfort and embarrassment resulting from these disorders can lead to depression, social isolation, and avoidance of physical and sexual activity.

If you're experiencing any of these problems, our urogynecology specialists can help restore your confidence and active lifestyle. We use the most current research and clinical standards to diagnose and treat pelvic floor disorders and other urogynecologic conditions.

Urogynecologic conditions we treat include:

- Chronic urinary tract infections
- Pelvic organ prolapse (dropping of the uterus, vaginal walls, bladder, rectum, or intestine)
- Fecal incontinence (passing of gas or stool involuntarily)
- Overactive bladder symptoms
- Pelvic organ prolapse (weakening of the pelvic muscles)
- Pelvic pain
- Urinary incontinence (leaking of urine)
- Voiding disorders, such as urinary retention



Gnakang Sarah Napoe, MD

“We are passionate about helping women whose quality of life has been impacted by pelvic floor disorders. All women deserve personalized and compassionate care to address their urogynecologic conditions.”

-Gnakang Sarah Napoe, MD

and



Mary Fleming Ackenbom, MD

*-Mary Fleming Ackenbom, MD
UPMC Magee-Womens Center
for Bladder and Pelvic Health*

Women's Cancer Services

UPMC Hillman Cancer Center is western Pennsylvania's only National Cancer Institute-designated Comprehensive Cancer Center.

We offer UPMC Hillman Cancer Center at outpatient locations in Monroeville (part of UPMC Magee-Womens) and at UPMC East and UPMC McKeesport. The Hillman network of doctors and specialists allows us to provide patients with access to the latest advancements in cancer prevention, detection, diagnosis, staging, and treatment, as well as experimental treatments at convenient, community-based locations.

Committed to advancing cancer care, our oncologists work closely with specialists from other UPMC Hillman Cancer Center locations. Through weekly reviews and patient conferences, our dedicated doctors strive to develop individualized, comprehensive treatment plans for each patient.

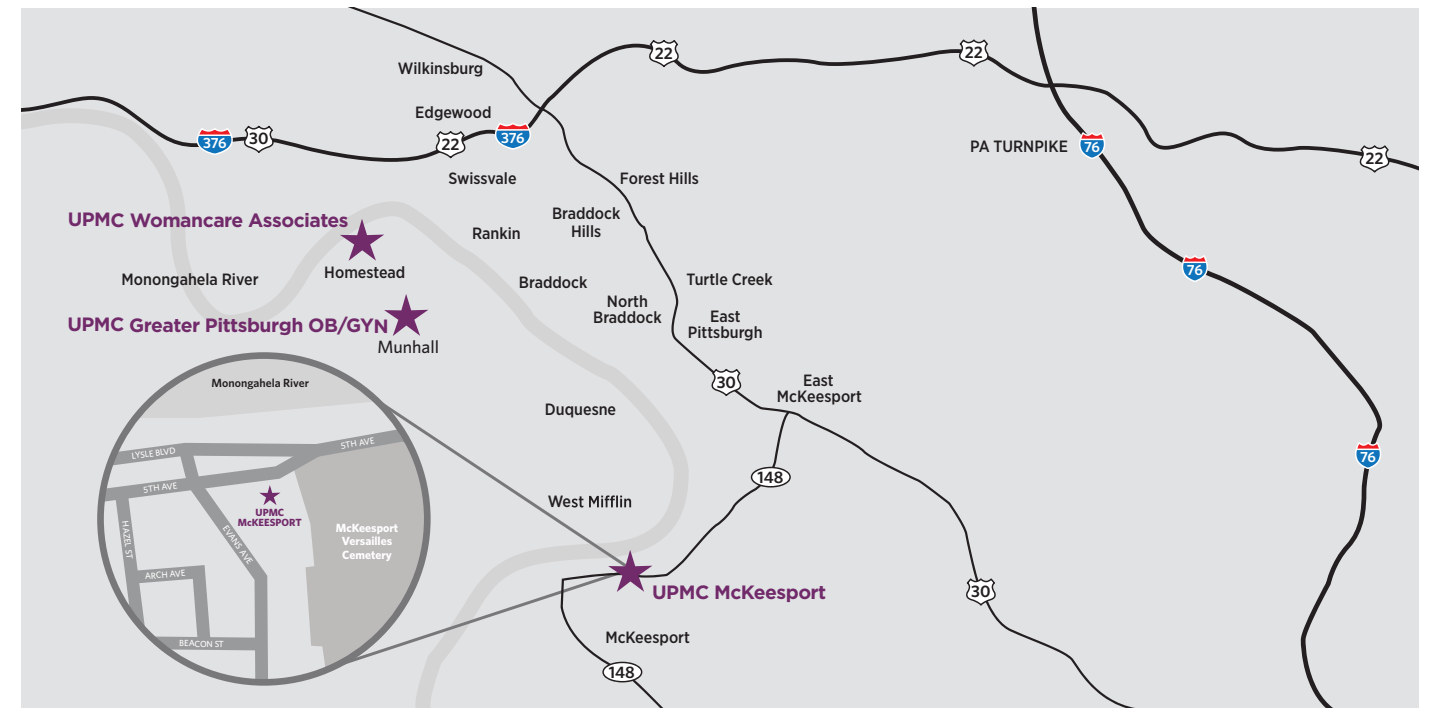
UPMC Hillman Cancer Center also continues a 15-year partnership with Excela Health to bring cancer specialists, the latest medical and radiation oncology treatments, supportive services, and leading clinical trials to residents of Westmoreland County in locations close to home.

Women's cancer services available in the Monroeville, Greensburg, or McKeesport areas include:

- Breast evaluation and surgery
- Gynecologic oncology evaluation
- Medical oncology — UPMC Hillman Cancer Center
- Radiation oncology — UPMC Hillman Cancer Center
- Women's imaging services



Your Guide to UPMC Women's Health Services in the McKeesport Area



UPMC McKeesport offers community members access to comprehensive women's health services, including imaging services.

UPMC Magee-Womens Imaging (UPMC McKeesport)

A-Level Mansfield Building
Suite MA-42
1500 Fifth Ave.
McKeesport, PA 15132
1-866-696-2433 (MyMagee)

UPMC Hillman Cancer Center at UPMC McKeesport

Medical Oncology
Mansfield Building, D-Level
Radiation Oncology
Wilson Wing, C-Level
1500 Fifth Ave.
McKeesport, PA 15132
412-664-2676

Women's health services in the McKeesport area include:

University NIA Ob-Gyn Associates

1500 Fifth Ave.
Crawford Building, Suite 725
McKeesport, PA 15132
412-664-2797

University of Pittsburgh Physicians, Department of Obstetrics and Gynecology

1500 Fifth Avenue
Crawford Building, Suite 725
McKeesport, PA 15132
412-641-7850

In addition to women's health services in the McKeesport area, UPMC offers general obstetrics and gynecologic services by highly skilled professionals to women in the Homestead and Munhall communities.

UPMC Greater Pittsburgh OB/GYN

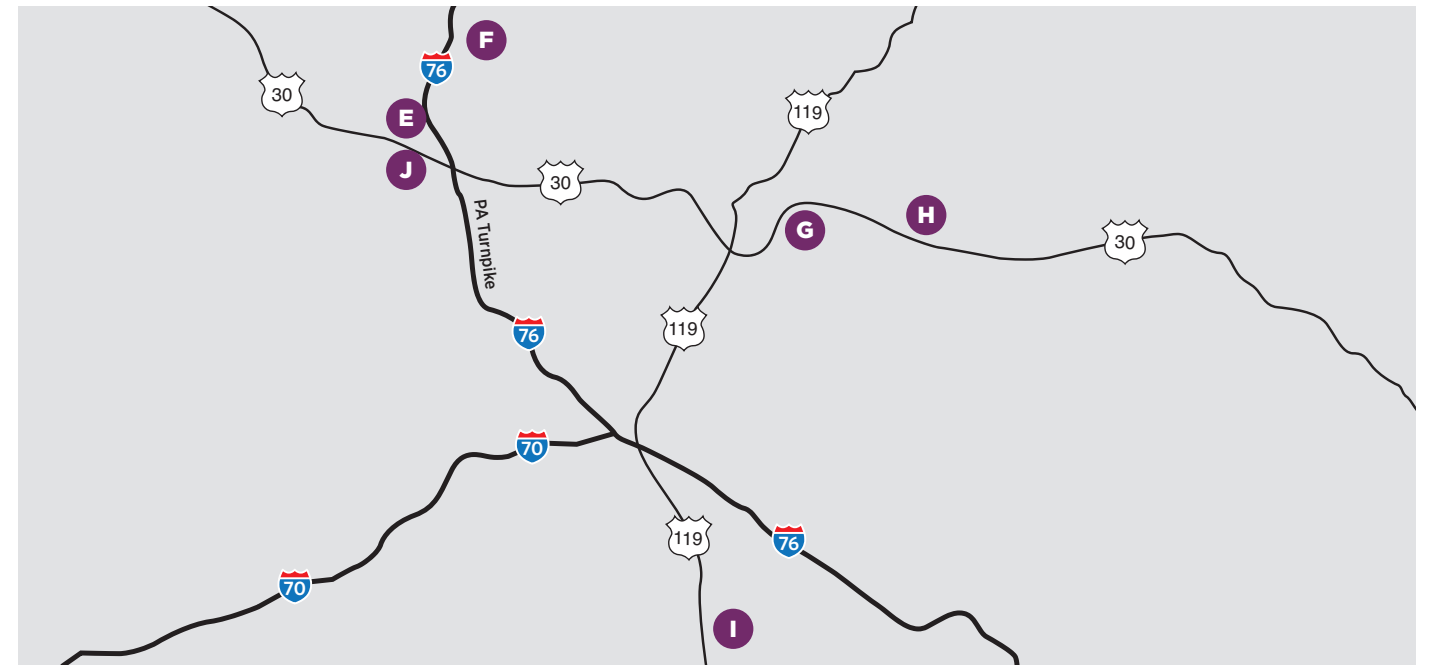
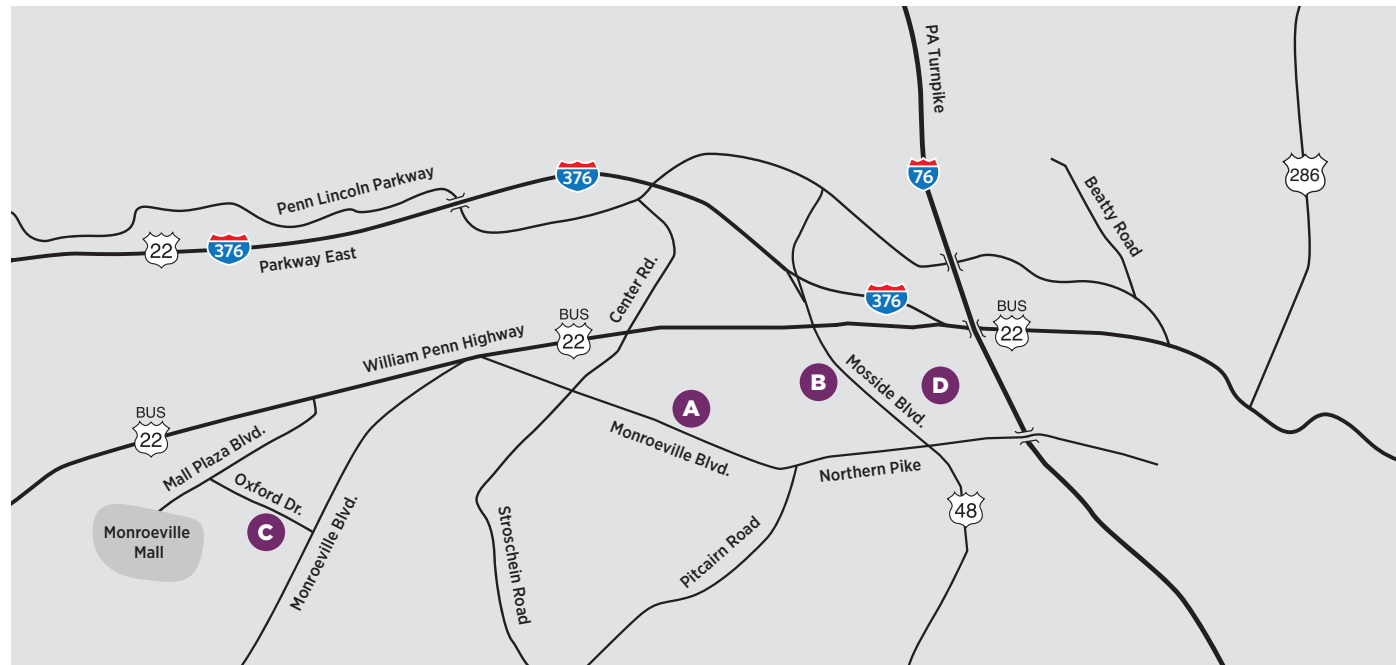
3311 Main St.
Munhall, PA 15120
412-462-7934

UPMC Womancare Associates

207 West 7th Ave.
Homestead, PA 15120
412-462-8010

UPMCMcKeesport.com/WomensHealth

Your Guide to UPMC Women's Health Services in Communities East of Pittsburgh



A UPMC Magee-Womens Imaging (Monroeville)

Corporate One Office Park
Building Two, Suite 330
4075 Monroeville Blvd.
Monroeville, PA 15146
1-800-649-4077

We offer a range of diagnostic testing, including mammography, ultrasound, and bone density testing, combined with convenient physician office practices for general ob-gyn and women's specialty physicians.

UPMC Neighborhood Health Center-Monroeville

Corporate One Office Park
Building Two, Suite 330
4075 Monroeville Blvd.
Monroeville, PA 15146
412-641-6722

UPMC neighborhood health centers help people meet primary preventive health care needs. Our Magee at Monroeville location serves women with low or no income or no insurance. Transportation can be provided.

UPMC Womancare Associates-Monroeville

Corporate One Office Park
Building Two, Suite 330
4075 Monroeville Blvd.
Monroeville, PA 15146
412-372-6262

Magee-Womens Surgical Associates-Monroeville

Corporate One Office Park
Building Two, Suite 315
4075 Monroeville Blvd.
Monroeville, PA 15146
412-641-4274

B UPMC East

2775 Mossie Blvd.
Monroeville, PA 15146
412-357-3000

UPMC East offers area residents access to world-class medical, surgical, rehabilitation, and transitional care. Patients diagnosed with breast and gynecologic cancers can also receive the latest radiation and medical oncology treatment at UPMC Hillman Cancer Center at UPMC East.

UPMC Hillman Cancer Center
Radiation Oncology
412-357-3037

C UPMC Hillman Cancer Center

400 Oxford Drive, Suite 102
Monroeville, PA 15146
412-374-1441

UPMC Hillman Cancer Center in Monroeville, part of UPMC Magee-Womens Hospital, specializes in medical oncology and allows patients to receive the highest level of cancer care close to home.

D UPMC Womancare Associates-Daugherty Drive

125 Daugherty Drive
Monroeville, PA 15146
412-372-0645

E UPMC Womancare Associates-Irwin

8955 Route 30
Irwin, PA 15642
412-864-4033

F UPMC Magee-Womens Imaging (Harrison City)

3520 Route 130
Irwin, PA 15642
412-641-4700

G UPMC Womancare Associates-Greensburg

UPMC Outpatient Center
410 Pellis Road, Lower Level
Greensburg, PA 15601
412-372-0645

H UPMC Hillman Cancer Center Excela Health

Arnold Palmer Pavilion
200 Village Drive
Greensburg, PA 15601
724-838-5660

I UPMC Hillman Cancer Center Excela Health

A part of Frick Hospital
508 South Church St., Suite 202
Mount Pleasant, PA 15666
724-547-7092

J UPMC Hillman Cancer Center Excela Health

8775 Norwin Ave., Suite J
North Huntingdon, PA 15642
724-834-1463

UPMCEast.com/WomensHealth