



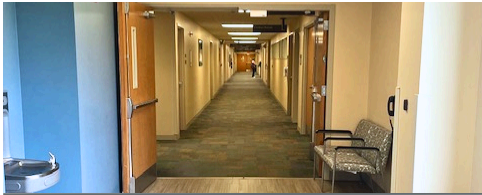
## Rehab and Transitional Care Unit (TCU) After Hours Parking and Directions

To ensure you have a smooth visit to the TCU or Rehab Unit, please follow these steps when visiting on **weekends, holidays, and during the hours of 5 p.m. to 7 a.m. Monday through Friday.**

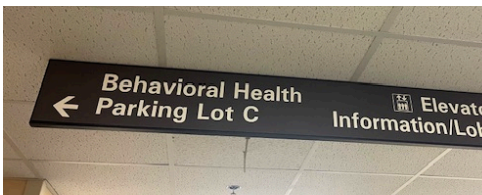
- **Rehab Unit Visiting Hours:** Monday through Saturday from 4 to 8 p.m. and Sundays from 12 to 8 p.m.



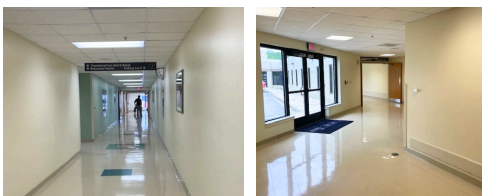
- 1 Instead of parking by the TCU/Rehab entrance, park in the Emergency Department (ED) parking lot and enter the hospital through the ED Entrance.



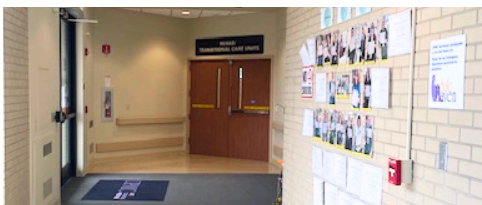
- 2 You will be screened upon entering. Then, walk past the ED Waiting Area and continue down the hallway.



- 3 When you reach the sign above that reads Behavioral Health/Parking Lot C, make a left through the double doors.



- 4 Continue down the long hallway, following the signs above for Rehab/TCU. You will go through 2 more sets of double doors.



- 5 After you go through the Rehab/TCU set of double doors, continue down the long hallway until you reach the double-door entrances to Rehab and TCU. They are right across from each other.



If you use a wheelchair or walker and need more assistance, please ask the staff at the ED entrance.

