



Hospital Medicine Physician UPMC ALTOONA

About Our Health System

UPMC Altoona (part of the University of Pittsburgh Medical Center hospital network) offers exceptional career growth opportunities and stability as part of a financially strong and thriving world-class health system. The 400-bed regional health care system provides care to nearly 350,000 residents in central Pennsylvania. UPMC Altoona is a level II trauma center, regional oncology center, and a Joint Commission certified stroke center. The hospital provides comprehensive cardiology and cardiovascular surgery, neurosurgery, vascular and endovascular surgery, behavioral health, vascular and wound care. The Health System's medical staff is comprised of approximately 400 primary care physicians and specialists.

About The Practice

The **UPMC Altoona Hospitalist Service** offers an exciting hospital medicine career opportunity for a BC/BE internal or family medicine physician in a well-established and dynamic program. The service is currently comprised of 25 physicians and 15+ APPs who work at UPMC Altoona and provide occasional emergency coverage at UPMC Bedford. Our team provides inpatient care with the support of medical and surgical specialists and a fully-staffed Intensivist Service to provide the best possible patient experience.

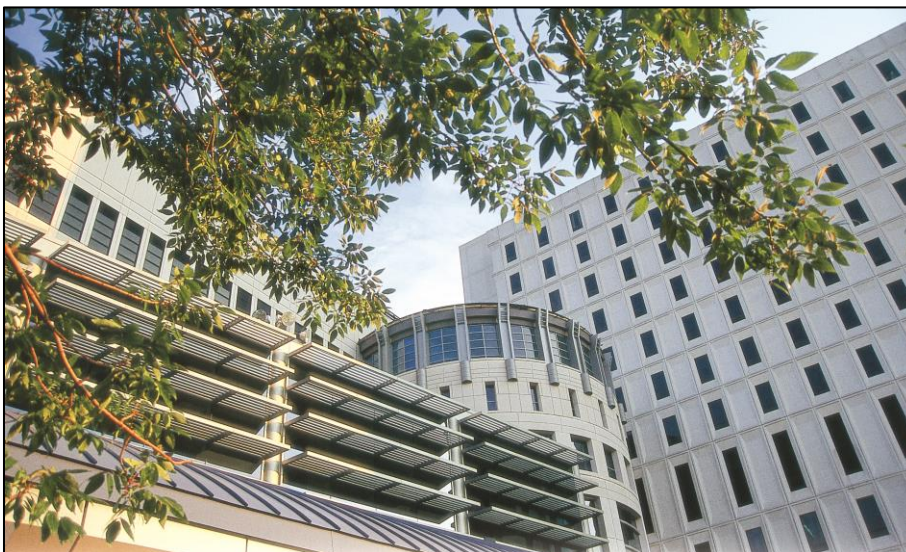
About The Opportunity

Each physician treats an average of 15-18 adult inpatients per day from admission through discharge, conducting history and physical assessments, strategizing to manage and improve patient health, and attempting to reduce length of stay through safe, medical practices and recommended treatment plans. Work schedule is typically 7 days on, 7 days off, 12-hour shifts, with night call covered by nocturnists. Intensivist Service covers ICU. No OB or peds. No procedures, and no responsibility for code response.

Competitive compensation and benefits package includes paid health/dental/vision insurance, life/disability insurance, occurrence-based malpractice insurance, employer-funded retirement plan and paid time off.

About Our Community

Altoona and the surrounding communities provide an opportunity to celebrate the change of seasons, appreciate an outdoor lifestyle, and enjoy a balance between work and play. The area is rich in culture, excellent schools, sports, outdoor recreation, shopping and dining experiences, with easy access to nearby major metropolitan areas.



Contact:

Kevin Hockenberry at
hockenberryk2@upmc.edu

814-889-2223

or

Christine Gildea

gildeacr@upmc.edu

814-949-6131

Website:

www.UPMCAltoona.org