



Chief Outpatient Neurology Physician UPMC ALTOONA

About Our Health System

UPMC Altoona (part of the University of Pittsburgh Medical Center hospital network) is a 400-bed regional healthcare provider serving central Pennsylvania. The hospital hosts a level II trauma center, regional oncology center, and a Joint Commission certified primary stroke center. Signature services include comprehensive cardiology and cardiovascular surgery, bariatric and robotic surgery, behavioral health, maternity and wound care. The medical staff is comprised of approximately 400 primary care physicians and specialists.

UPMC Altoona Regional Health Services (ARHS) is a multi-specialty physician group that employs over 120 physicians and 75 advance practice providers (APPs) in cardiology, dermatology, endocrinology, ENT, family practice, general/bariatric/vascular surgery, internal medicine, medical oncology, neurology, orthopedics, plastic surgery, podiatry, pulmonology, radiology and urology.

About The Practice

ARHS Blair Medical Neurology practice offers an exciting leadership opportunity for an experienced BC neurologist to lead our efforts to grow the practice. The practice currently includes 1 outpatient neurologist with locums support, 2 neuro-hospitalists and 2 APPs, with plans to add 2 additional outpatient neurologists. Our neurology team provides general neurology, neurophysiology, neuromuscular services, cognitive neurology, electro-diagnostic medicine, stroke, sleep medicine and Botox migraine treatments. Outpatient clinic, as well as lab, imaging, rehab, and many primary and specialty physician offices, is in a medical mall 1-1/2 miles from the hospital.

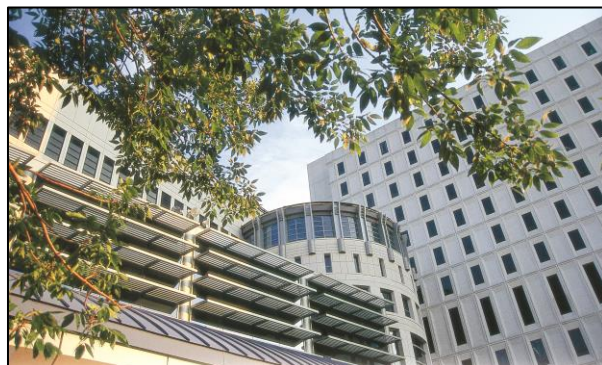
About The Opportunity

Primarily an outpatient practice, each physician sees an average of 20 patients a day. Current physicians read EEGs, EMGs and sleep studies. Work schedule is Monday-Friday, 8 am-5 pm. Call is currently covered by neuro-hospitalists. Candidate must be board certified with practice experience.

Competitive compensation and benefits package includes base salary plus productivity bonus, sign-on bonus, relocation, annual CME days and allowance, PTO, health/dental/vision/life and disability insurance, employer-funded retirement plan, and occurrence-based malpractice insurance.

About Our Community

Altoona is a small city surrounded by mountains in central Pennsylvania, with easy access to 5 major metro areas – offering a friendly, and uncomplicated lifestyle filled with cultural and recreational opportunities. Hiking, biking, paddling, fishing and skiing are popular at nearby state parks, resorts and rail trails. Big10 sports, national touring performing artists and an active social scene are among the highlights of neighboring State College, home to Penn State's University Park campus.



Contact:

Christine Gildea
gildeacr@upmc.edu
814-949-6131

YouTube Video:

[UPMC Altoona/Bedford](#)