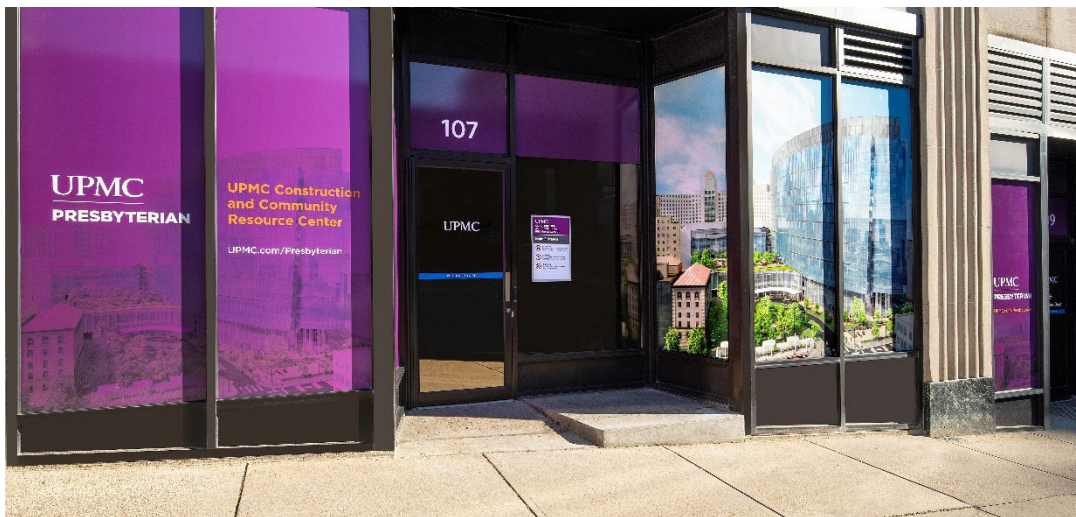


UPMC | CONSTRUCTION AND COMMUNITY RESOURCE CENTER

Art @ Atwood Art Exhibition Opportunity



107 Atwood St, Pittsburgh, PA, 15213

The UPMC Construction and Community Resource Center (CCRC) is the “front door” for individuals and businesses interested in the new UPMC Presbyterian and UPMC’s vendor diversity, equity, and inclusion (DEI) initiatives. The CCRC hosts career exposure events, informational sessions, and training opportunities. The internal stakeholders include departments within UPMC, UPMC Health Plan and various external stakeholders such as construction partners, design partners, project consultants Union Trades, local grass root community organizations, educational institutions, and Higher education institutions.

To further connect the center to the community, UPMC seeks to present the works of art created by artist in our region in this office space.

We are seeking proposals from curators, locally owned art organizations, diverse artists and vendors ([Minority, Women, Veteran, Disabled Veteran, Disabled, LGBTQ, and Disadvantage certified and non-certified](#)), and galleries to curate, facilitate, and install exhibitions in the location.

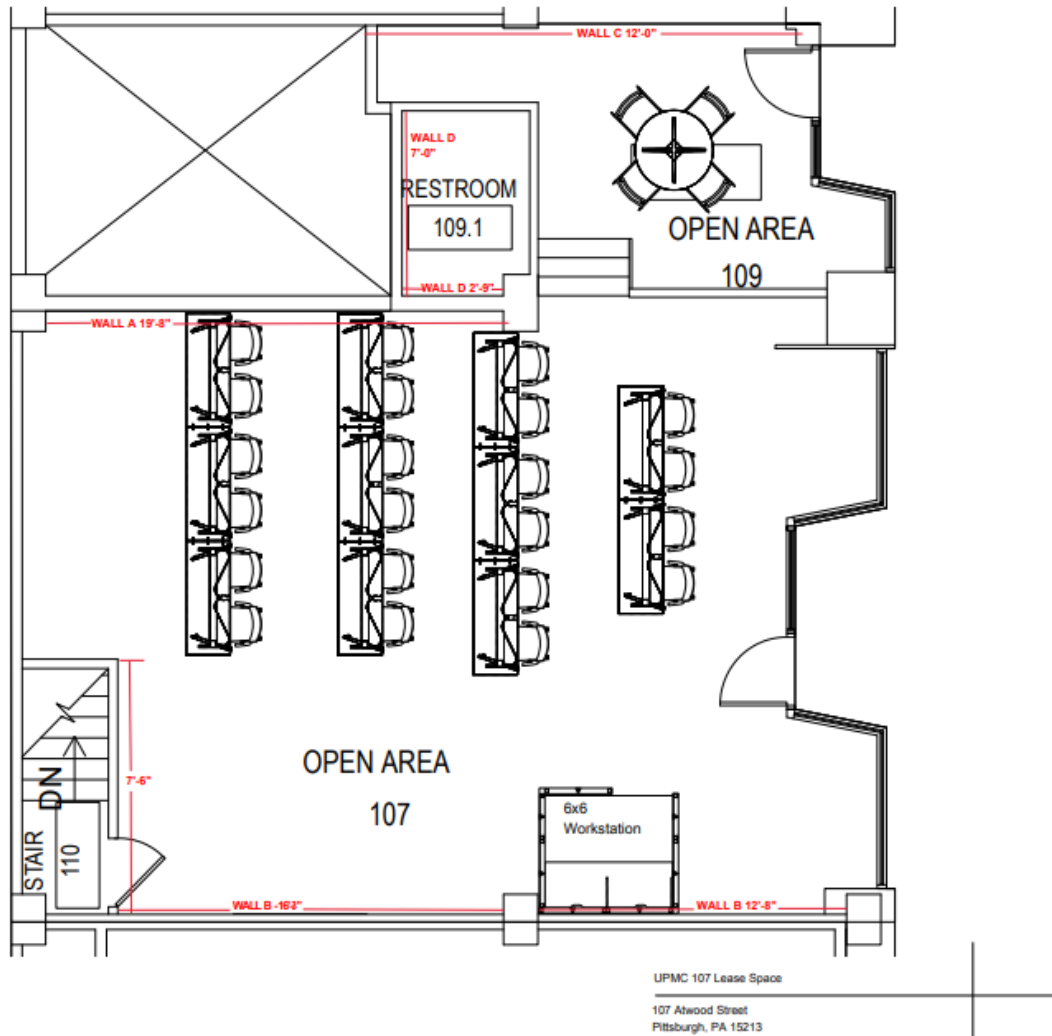
Each exhibition will be featured for six months. Exhibitions will begin in fall 2023 and continue through 2025.

For more information about the center, visit [UPMC Construction and Community Resource Center](#).

Art @ Atwood

UPMC Construction and Community Resource Center
107 Atwood Street, Pittsburgh, PA 15213

Installation Space Available



Art @ Atwood
UPMC Construction and Community Resource Center
Exhibit Space Sample

107 OPEN AREA - RIGHT WALL



LEFT WALL





Art @ Atwood

UPMC Construction and Community Resource Center

How to Apply

Submit the following materials in your exhibition proposal:

1. Letter of interest, including the name of the key contact person for the exhibition. Please outline your required exhibitor fee. This fee is all inclusive of the costs associated with the exhibition including but not limited to administrative fees, artist fees, artwork transportation, artwork installation, and artwork removal. Honorariums to participating artists are also included in this fee.
2. Images of artwork to be included in the exhibition. Artwork may be offered for sale. The entity presenting the exhibition must manage the sales of artwork. UPMC will not require a percentage of sales.
3. Name of artist, title of artwork, size, materials, installation method, and a description of the artwork to be included in the exhibition. Certificate of authenticity accepted but not required.
4. Curatorial statement about the exhibition.
5. For [diverse certified companies/artists](#) participating in this RFP, please provide your diversity certification documentation as an attachment to your proposal.

Send proposals via email to:

Adrienne Miles, DEI Manager
UPMC Corporate Construction
T 412.647.9564
C 412.910.3403

milesap2@upmc.edu

Proposals are accepted on an ongoing basis. There is no deadline.