



April 2026

R.K.M.I. RESEARCH REVIEW

Scholar Spotlight - Dr. Anne-Marie Rick, MD, MPH, PhD

Anne-Marie Rick, MD, MPH, PhD, is a tenure-stream Assistant Professor of Pediatrics and Clinical and Translational Science in the Division of General Academic Pediatrics at the University of Pittsburgh School of Medicine and UPMC Children's Hospital of Pittsburgh. She also serves as Co-Director of the Newborn Research Support Services (NuRSERy) program at Magee-Womens Hospital. Dr. Rick received her Bachelor of Science from the University of Notre Dame and her medical degree and Master of Public Health from Johns Hopkins University. She completed her pediatric internship, residency, and global health fellowship at Children's Hospital Colorado, followed by fellowship training in general academic pediatrics and a PhD in Clinical and Translational Science at the University of Pittsburgh.



Dr. Rick's clinical research program focuses on maternal and infant infectious diseases, with particular interests in vaccines during pregnancy, infant immune protection, and perinatal viral exposures. Her research spans both prospective clinical studies and large electronic health record-based analyses to better understand how maternal vaccination and infection shape outcomes for mothers and babies. She has led and collaborated on studies involving RSV, influenza, COVID-19, group B streptococcus, and hepatitis C, with the broader goal of improving prevention strategies and reducing infectious disease burden in early life.

Her current studies include examining correlates of influenza protection in breastmilk, real-world protection and safety of maternal RSV vaccination for infants, long-term

immunogenicity of maternal RSV vaccination in postpartum women, safety and immunogenicity of a group B streptococcus vaccine in pregnancy, and development of a point-of-care test for perinatal hepatitis C screening. Clinically, Dr. Rick enjoys caring for newborns in the newborn nursery at Magee-Womens Hospital, where her interests center on pediatric care and the intersection of maternal and child health. She is particularly passionate about translating research findings into practical strategies that improve outcomes for mothers, infants, and families.

Discover Pitt's Research Resources Portal

The University of Pittsburgh's [Health Sciences Core Research Facilities \(HSCRF\) Resources Portal](#) is a centralized, searchable hub designed to help investigators quickly find and access shared research resources across Pitt and UPMC. The portal brings together hundreds of core facilities, services, and specialized equipment—spanning areas such as biospecimen and histology, imaging and microscopy, computing and data analysis, clinical research, cell biology, model organisms, and more—making it easier to identify the right expertise and infrastructure for your project.

With powerful search tools, practical "How can I..." guides, and direct links to facility contacts, the portal streamlines everything from experimental planning to grant preparation. Researchers are also encouraged to acknowledge shared resources as requested, helping sustain the facilities that support discovery and innovation across the Pitt research community. Explore the portal to connect with resources that can accelerate your research and collaboration efforts.

For more information, click the link above or scan QR code.

University of Pittsburgh
Health Sciences Core Research Facilities
Biomedical Research Resources

Search biomedical research resources
e.g. *comput* +DNA +seq*
Search Help

Biospecimen & Histology
Imaging & Microscopy
Computing & Data Analysis
Cell Biology
Clinical Research
Model Organisms
OMICS
In Vivo/Vitro Agents
Other Laboratory Support

Laboratory Resource FAQs
How can I...
Equipment Search
e.g. Fortessa or Xenium
Search Help
List all Facilities
Data and Other Resource FAQs
How can I...
Boilerplate Summary of HS shared Resources

Research Resources Coordinator Site
Citations Matter
Support the facilities that support your research by citing as requested in papers, posters and presentations.
Email Research Resources Coordinator



UPMC Bridges Research Readiness Briefs Resume

With the revised UPMC Bridges Wave 2 go-live date of October 3, 2026, UPMC is resuming their Research Readiness Briefs (formerly Education Sprints) to support research-specific workflows in Epic. These live, role-based sessions run April 3 through June 5 and provide focused overviews of key research activities in Epic Bridges, including OnCore and Epic integration, user provisioning, research documentation, orders, billing compliance, investigational medications, and more. Each session has a unique registration link, attendees may register for one or multiple sessions based on their role, and all sessions will be recorded for on-demand viewing. Investigators, research managers, coordinators, and research support staff are encouraged to attend sessions relevant to their responsibilities as we prepare for the October go-live.

4/3 - Understanding the Role of OnCore and Epic in Research

<https://events.teams.microsoft.com/event/1b50fcc1-e6a3-4ee5-bdd0-47d729bb53fe@8b3dd73e-4e72-4679-b191-56da1588712b>

4/10 - Research User Provisioning

<https://events.teams.microsoft.com/event/0f57cf78-a3e6-486d-8bfd-f53e95e14d10@8b3dd73e-4e72-4679-b191-56da1588712b>

4/17 - Research Linking

<https://events.teams.microsoft.com/event/febc4360-8d9a-4a2e-8b39-4df7943e01c8@8b3dd73e-4e72-4679-b191-56da1588712b>

4/24 - Research Documentation

<https://events.teams.microsoft.com/event/f1d108ce-4186-48a2-b967-801959828800@8b3dd73e-4e72-4679-b191-56da1588712b>

5/1 - Research Orders

<https://events.teams.microsoft.com/event/5d053670-86ef-4108-9e81-6be6c178e5b8@8b3dd73e-4e72-4679-b191-56da1588712b>

5/8 - Release of Information

<https://events.teams.microsoft.com/event/f641e28b-0671-42ec-b6ed-09409cb5645e@8b3dd73e-4e72-4679-b191-56da1588712b>

5/15 - Investigational Medications

<https://events.teams.microsoft.com/event/f996ccd5-ee2b-443c-a61e-9744edfd9e49@8b3dd73e-4e72-4679-b191-56da1588712b>

5/22 - Research Billing Review/Compliance

<https://events.teams.microsoft.com/event/3062f96f-08df-4762-9fa8-df62106207c5@8b3dd73e-4e72-4679-b191-56da1588712b>

5/29 - Registration of Research Subjects

<https://events.teams.microsoft.com/event/6ddb5c5a-4a50-433c-8a45-366060e6d25a@8b3dd73e-4e72-4679-b191-56da1588712b>

6/5 - Study Monitor Workflow

<https://events.teams.microsoft.com/event/5cfb18c8-3f57-4300-9535-660b48c143bf@8b3dd73e-4e72-4679-b191-56da1588712b>

Claude for Education: An AI Resource for Researchers



Claude for Education is an AI service designed to support research, teaching, and scholarship while maintaining academic integrity and strong privacy protections. Built by Anthropic, the platform is designed to strengthen critical thinking, not replace it, and helps researchers work through complex ideas, data, and decisions through guided exploration.

For researchers, Claude can assist with content development, literature synthesis, coding support, data analysis, and project organization. Its Learning Mode emphasizes principle-based reasoning and Socratic questioning, making it a useful tool for refining research questions, pressure-testing assumptions, and supporting thoughtful analysis. Importantly, Claude for Education meets university security standards and does not use Pitt data to train generative AI models.

How to Access Claude for Education:

University of Pittsburgh faculty, staff, and students can access Claude for Education using their Pitt credentials. To get started, visit <https://claude.ai>, enter your @pitt.edu email address, and select Continue with SSO. You will then authenticate using Pitt Passport. Once logged in, you can begin using Claude to support research, analysis, writing, and other academic work.

Celebrating Our Newest Mellon Scholar Alumni!

We are thrilled to congratulate the newest graduates of the Mellon Scholars Program! With their promotion from assistant professor to associate professor in the tenure track, they've reached an exciting new milestone in their academic careers. As they join the distinguished ranks of Mellon Scholar alumni, we know their journeys are only just beginning. We can't wait to see the brilliant paths they forge and the change they'll create in the world. Congratulations to you all!

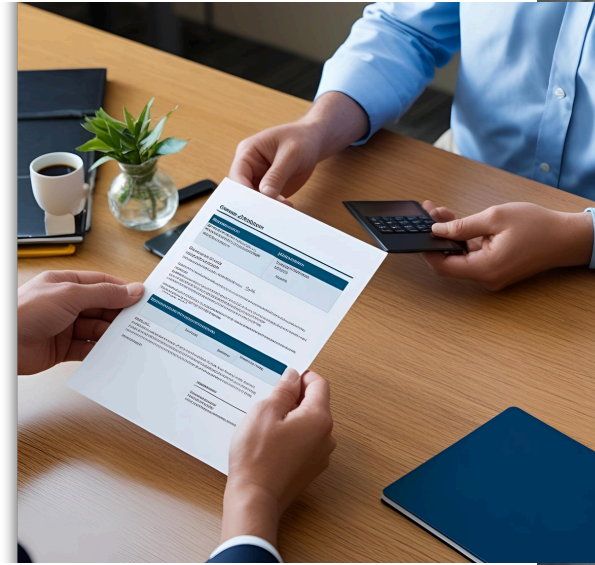
Rannar Airik
Catherine Forster



Mock Study Section Grant Review Process

Mellon Scholars are encouraged to submit their complete grant applications (understandably perhaps in a very rough draft form) to administration via email roughly two months in advance of the appropriate funding deadline, along with a list of 3-5 potential Pitt reviewers. Reviewers may meet for discussions. The scholar will be provided with the written critiques from each reviewer and a summary of the discussion between the reviewers if one occurs. The scholar will be blinded to the identity of their reviewers. Discussion summaries and critiques will be returned to the scholar prior to the grant's agency due date, so that the scholar can incorporate any changes in response to these critiques.

Submission Email Address: RKMIAdmin@UPMC.edu



The mock grant review was extremely helpful! Having fresh eyes read my proposal was great as they were able point out things my mentors and I had not thought about before. I do think the feedback I received made my proposal stronger and I am grateful for the reviewers! - Dr. Jenny Ruiz, MD, MSCE

UNIVERSITY OF PITTSBURGH
Health Sciences 
LEADERSHIP ACADEMY
FOR EARLY CAREER FACULTY

Congratulations to Our Leadership Academy Participants

Congratulations to Vikram Raghu and Carolina Pinzon-Guzman, whose participation in the 2026 Health Sciences Leadership Academy for Early Career Faculty is supported through funding from the RK Mellon Institute. Offered by the University of Pittsburgh's Office of Academic Career Development, this year-long program fosters the development of academic leaders through training in shared leadership, team building, and inclusive practices. We are proud to see RK Mellon-supported scholars represented in this cohort and look forward to the continued leadership they will bring to our research community.

Regulatory Services



Follow the link above or use the QR code for more information on the comprehensive services offered by PCRS.

As an RKMI Scholar, you will have shared access to a dedicated regulatory coordinator from the [Pediatric Clinical Research Services](#) (PCRS) group to assist with your regulatory needs.

Regulatory Services Available:

- Institutional Review Board (PittPRO) submissions
- IACUC submissions
- Organization and maintenance of regulatory files
- ClinicalTrials.gov support
- Industry-sponsored study submissions and management

To access these services, please reach out to our PCRS regulatory coordinator:

Valerie Miller millerv4@upmc.edu
412-692-7336

"Leading my first clinical trial has been a complex undertaking, so I am especially grateful for the added regulatory support of CRSS through the Mellon Scholar Program. Their expertise has provided me with peace of mind, and their quick responses and practical guidance have been invaluable. Special shout out to Valerie, Vibha, and Liz for their support!" - Dr. Jessica Jarvis, PhD, MT-BC

Core Funds

Core funds in the amount of \$2000 are available annually to Mellon Scholars that are not R01 funded.

To receive funds, submit a paragraph request via email to Dr. George Gittes at Gittesgk@upmc.edu explaining the planned use of the money.

Core Fund Recipients

Taylor Eddens
Vikram Raghu
Yijen Wu

“

The core funds have enabled key computing and software resources that allow me to maintain and expand cross-disciplinary collaborations beyond what would be feasible with my existing research support. - Dr. Vikram Raghu, PhD

”

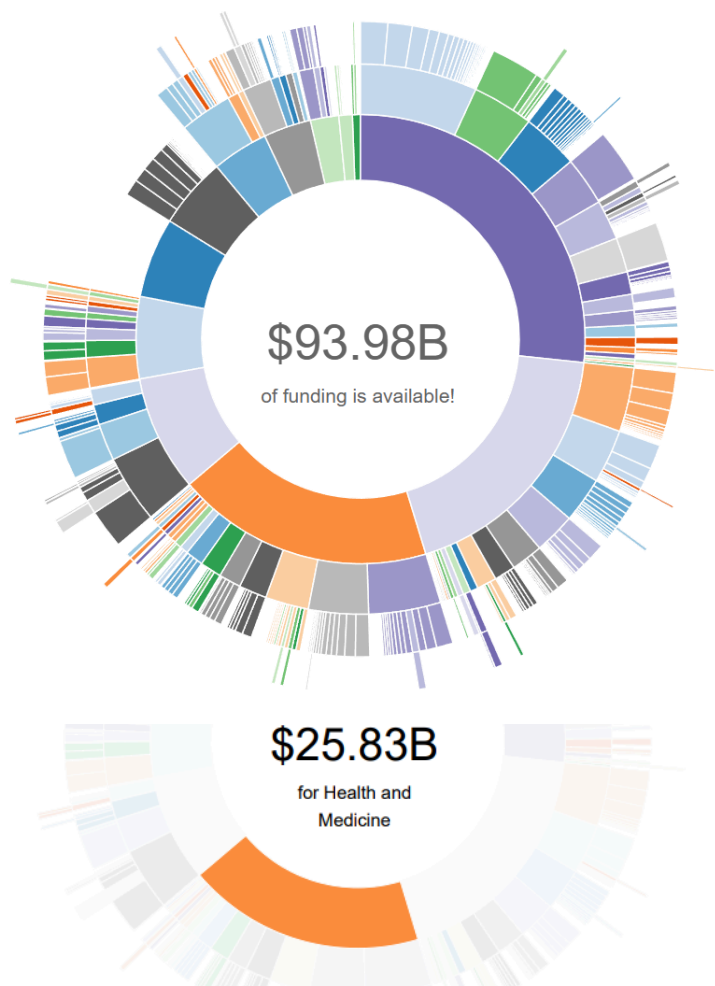
Explore Pivot: Your Gateway to Funding Opportunities



Pivot, a powerful tool offered through The Office of Sponsored Programs (OSP), is designed to help faculty, researchers, and grant applicants discover funding opportunities with ease. Pivot provides access to a comprehensive database of grants, fellowships, and research funding from government agencies, foundations, and industry partners worldwide.

Why Use Pivot?

- **Customized Searches:** Filter opportunities by discipline, sponsor type, deadline, and eligibility.
- **Funding Alerts:** Set up personalized alerts so you never miss a relevant opportunity.
- **Collaboration Features:** Identify potential collaborators within and outside your institution.



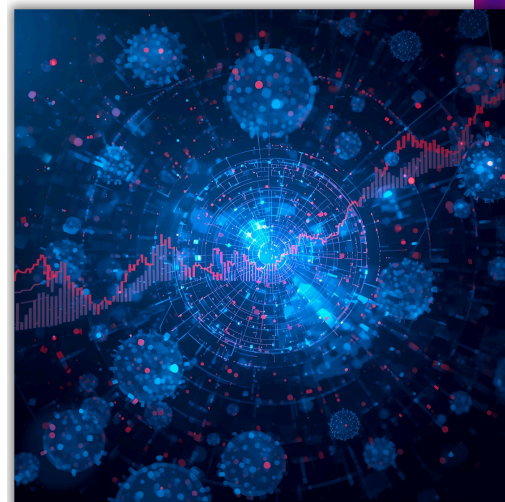
Getting Started: Access [Pivot](#) by scanning the QR code or click the link and log in with your institutional credentials. Once inside, you can create a profile, save searches, and start building your funding pipeline today.

For training on how to use Pivot, click [here](#) to visit the Pivot-RP Training YouTube channel.

Biostatistics Support

Faculty in the Department of Pediatrics now have access to dedicated Biostatistics support! Whether you're designing a study, analyzing complex data, or preparing a manuscript, we have experts here to guide you through every step of the research process. From methodology to interpretation, we're committed to helping you turn data into meaningful insights that advance child health. Reach out today to elevate your research!

Qiong Wu, PhD - Qiongwu@pitt.edu
Rangos Office Hours:
Thursdays 9:30am - 1:30pm | Room 6109



Upcoming Speakers at Rangos

Mellon Scholar Seminar Series: 3PM-4PM

Reception to follow seminar

Mellon Seminar Watch Party at CHOB

April 15 - Katie Poholek & Michael Jurzcak

May 20 - Rupa Radhakrishnan & Kelsey Sullivan

June 17 - Maya Ragavan & Anita McElroy

Rangos Research Seminar Series: 12PM-1PM

April 7 - Dr. Kyle McCracken, MD, PhD

April 14 - Amelie Collins, MD, PhD

April 21 - Michael Waterfield, MD, PhD

April 28 - Karine Gibbs, PhD

May 5 - Nick Burton, PhD

May 12 - Tom Lloyd, MD, PhD

May 19 - Megan Cooper, MD, PhD

May 26 - Karl-Dimitar Bissig, MD, PhD



Share Your Feedback!
RKMIAdmin@upmc.edu



www.chp.edu/research/rkmfi