

Neonatal Developmental Follow-up Clinic at UPMC Children's Hospital of Pittsburgh

The Neonatal Developmental Follow-up Clinic provides specialized, in-depth neurodevelopmental assessment for infants who were born prematurely or with other medical conditions and were hospitalized in a Neonatal Intensive Care Unit (NICU) or Cardiac Intensive Care Unit (CICU). Our clinic does not replace your pediatrician check-ups or early intervention services; we provide additional evaluation and monitoring for children after they graduate from NICUs and CICUs. We recommend that high-risk infants receive all these services.

Our Team

Our specialized team has extensive experience addressing the needs of families caring for their infants with medically complex conditions. Our team consists of developmental specialists and pediatric psychologists. Our number one priority is to help your child reach their full potential.

Timeline

Assessments are conducted at different intervals throughout the first two years of your child's life as determined by the needs of your child, and we use your child's adjusted age when applicable. This may look different for everyone. Here is our typical schedule of appointments.

- Initial telemedicine appointment: one to two months after discharge from NICU or CICU
- First in-person appointment: 4-6 months old
- Second in-person appointment: 12-14 months old
- Third in-person appointment: 18-24 months old

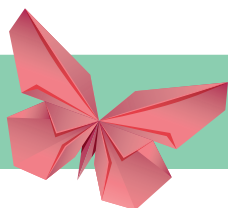
Your Visit

At each visit, you and your child should expect the following:

- We will talk with you about your child's feeding, sleeping, behavior, and developmental milestones.
- We will complete a **standardized developmental assessment**, examining your child's development, including motor (movement), cognitive (early thinking and problem-solving), and communication. This will just look like playing to your child!
- Depending on your child's age, we will have you complete **screening questionnaires** to learn more about their social-emotional and behavioral development.
- We will provide you with suggestions on encouraging developmental progress with **recommended activities and interventions** to do with your child at home.
- We may recommend **additional services** in the community or hospital to support developmental, medical, or familial needs.
- We will provide you with **immediate feedback** on your child's development and will discuss **your specific concerns and questions**.

Want To See Us Sooner?

If you have concerns that your child is not meeting age-appropriate milestones or want to talk about your child's health, development, or behavior, you can learn more by calling **412-692-5100**. You may also message one of our providers on the **myCHP portal** if you have any questions or concerns that you would like to discuss.



Don't have access to the **myCHP portal**? Sign up here.

