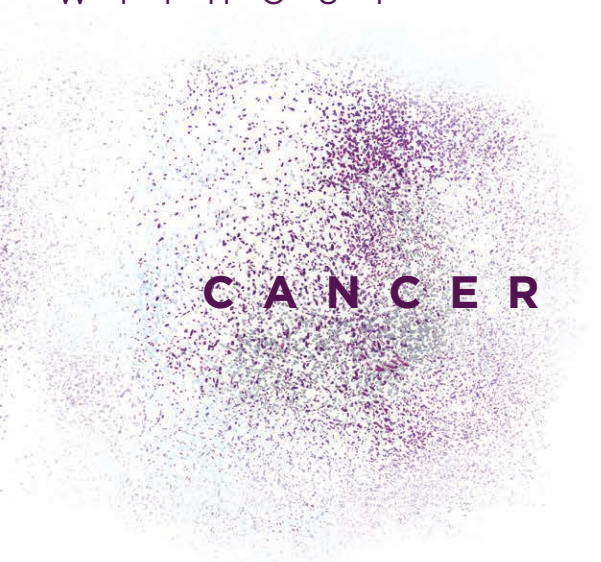
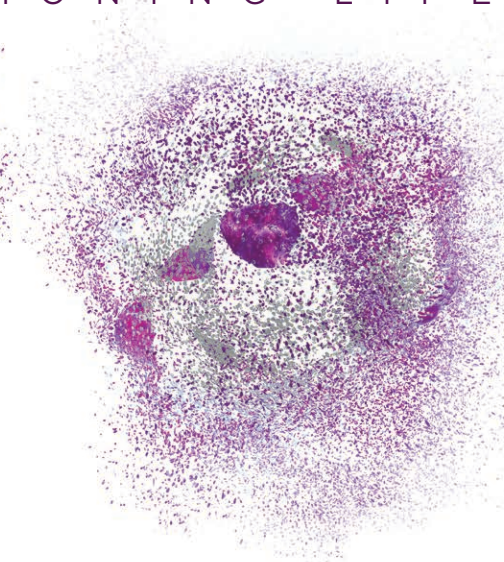
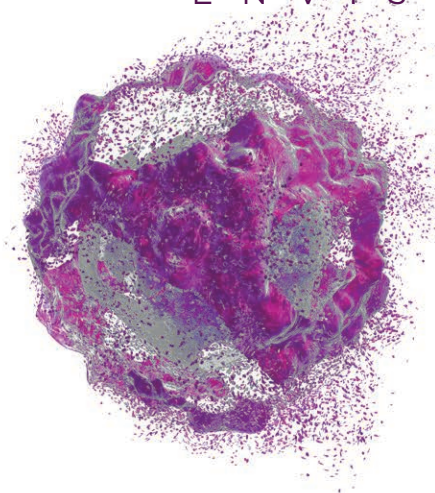
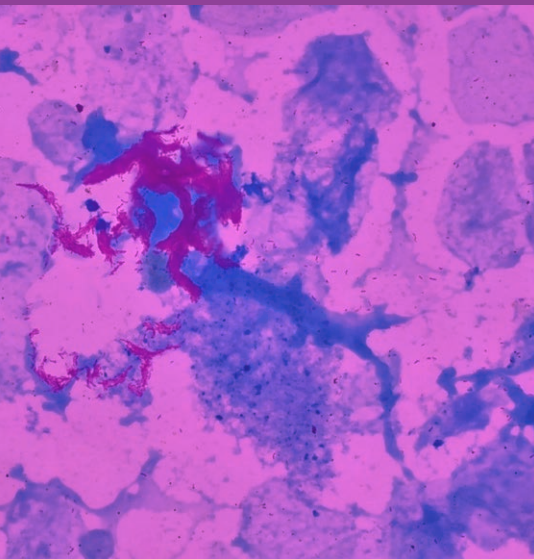


ENVISIONING LIFE WITHOUT



CANCER



**OUR MISSION:** TO PROVIDE EXCEPTIONAL PATIENT CARE AS A WORLD LEADER IN UNDERSTANDING, PREVENTING, AND TREATING CANCER THROUGH THE INTEGRATION OF SCIENTIFIC DISCOVERY, CLINICAL EXCELLENCE, AND COMMUNITY PARTNERSHIPS, WHILE TRAINING THE NEXT GENERATION OF CANCER EXPERTS.

**OUR VISION:** TO BRING TOGETHER COMPASSIONATE CARE AND TRANSFORMATIVE RESEARCH TO ACHIEVE THE EXTRAORDINARY: **LIFE WITHOUT CANCER.**

#### OUR GUIDING PRINCIPLES:

We put our patients first.



We are guided by science.



We respect and value each other.



We believe in the power of kindness.



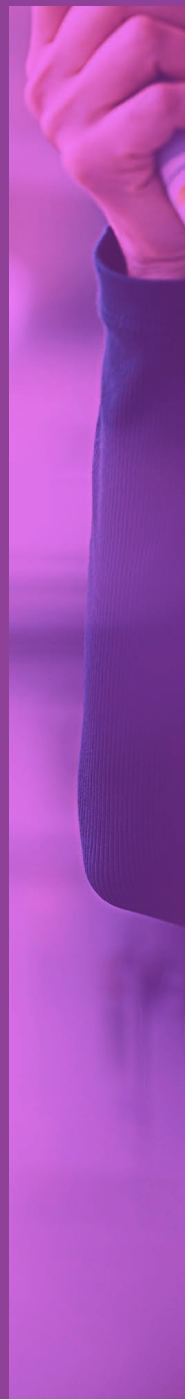
We thrive on discovery.



We educate tomorrow's leaders.



Together, we will end cancer.





At UPMC Hillman Cancer Center, we are envisioning life without cancer. We are a nationally recognized cancer center harnessing the expertise of physicians, scientists, and allied health care professionals who deliver comprehensive clinical care, lead cutting-edge research, train future generations of cancer experts, and engage with our communities to detect, treat, and prevent cancer.



**UPMC** | **HILLMAN  
CANCER CENTER**



UPMC Hillman is one of only 57 National Cancer Institute (NCI)-designated Comprehensive Cancer Centers in the United States, one of just three in Pennsylvania, and the only one in western Pennsylvania. The NCI — our nation’s authority on cancer — extends Comprehensive Cancer Center designation to an elite group of centers that demonstrate excellence in research, patient care, education, and community outreach. UPMC Hillman first earned NCI Comprehensive Cancer Center designation in 1990 and undergoes an intensive evaluation of our research programs and related activities approximately every five years. In the 2020 renewal, UPMC Hillman earned an exceptional rating — the highest possible.



# CLINICAL CARE

UPMC Hillman's clinical network extends throughout Pennsylvania, Ohio, New York, and Maryland to international locations in Ireland and Italy. Our team has a presence in UPMC hospitals, community partner hospitals, outpatient medical centers, and freestanding clinics to provide medical, radiation, and surgical oncology services as well as supportive services to help patients and their families navigate cancer care.



Our flagship location in Pittsburgh's Shadyside neighborhood opened in 2002, and since then the UPMC Hillman network has grown to include more than 70 locations across an ever-expanding geographic footprint. In addition to our wholly owned practices, UPMC Hillman has forged partnerships with community hospitals in western Pa. and Ohio — including Independence Health System, Heritage Valley Health System, Indiana Regional Medical Center, Punxsutawney Area Hospital, St. Clair Health and Trinity Health System — to bring world-class oncology services to people in suburban and rural communities and reduce their need to travel.





Our experts provide comprehensive care for patients with all types of cancers — no matter how common, rare, or complex — including:

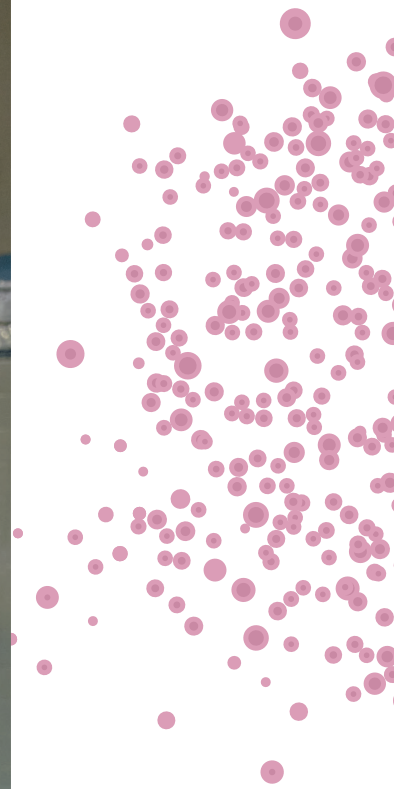
- Blood cancer
- Brain and nervous system cancer
- Breast cancer
- Colon and rectal cancer
- Endocrine and thyroid cancer
- Esophageal cancer
- Gynecologic cancer
- Head and neck cancer
- Liver cancer
- Lung cancer
- Melanoma and skin cancers
- Mesothelioma
- Pancreatic cancer
- Prostate cancer
- Sarcoma
- Urologic cancer

UPMC HILLMAN EXPERTS  
PIONEERED PET-CT  
PLANNING FOR RADIATION  
ONCOLOGY TREATMENTS



FIRST IN WESTERN PA. TO OFFER  
FDA-APPROVED CHIMERIC ANTIGEN  
RECEPTOR (CAR) T-CELL THERAPY  
FOR CERTAIN BLOOD CANCERS





---

AMONG THE HIGHEST VOLUME PROGRAMS NATIONALLY FOR GASTROINTESTINAL CANCER SURGERIES, INCLUDING ROBOTIC PANCREATIC SURGERY, LAPAROSCOPIC LIVER SURGERY, AND REGIONAL THERAPIES FOR COMPLEX ABDOMINAL CANCERS

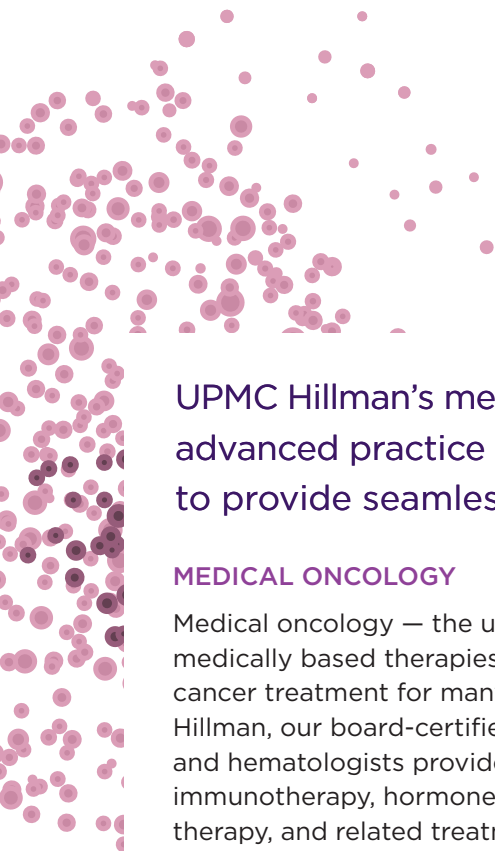
---

TO FIND CARE, TO REFER A PATIENT, OR WITH GENERAL INQUIRIES, PLEASE CALL **1-855-960-0578**.

***Insurance Access***

UPMC Hillman Cancer Center accepts most major insurers, including Aetna, Cigna, Highmark\*, United Healthcare, and UPMC Health Plan. For questions about access, please call 1-855-646-8762.

*\*Highmark members with narrow-network plans have limited in-network access to UPMC.*



UPMC Hillman’s medical, radiation, and surgical oncologists — together with advanced practice providers, nurses, and other allied specialists — collaborate to provide seamless care across our spectrum of services, including:

### MEDICAL ONCOLOGY

Medical oncology — the use of drugs and other medically based therapies — is a cornerstone of cancer treatment for many patients. At UPMC Hillman, our board-certified medical oncologists and hematologists provide chemotherapy, immunotherapy, hormone therapy, targeted therapy, and related treatments for thousands of patients each year.



Immunotherapies, which modify a patient’s own immune system or immune cells to fight cancer, have become an integral part of treatment for patients with certain types of cancers, such as melanoma,

blood cancers, and head and neck cancers. UPMC Hillman is home to western Pa.’s busiest stem cell transplant program and is accredited by the Foundation for the Accreditation of Cellular Therapies (FACT), meeting rigorous standards for quality and care. Beyond stem cell transplantation, our experts also deliver advanced immunotherapies like chimeric antigen receptor (CAR) T-cell therapy and tumor-infiltrating lymphocyte (TIL) therapy and are investigating new ways to harness these treatments for a broader patient population.

### RADIATION ONCOLOGY

UPMC Hillman’s board-certified radiation oncologists use state-of-the-art imaging technology and radiation delivery systems to provide safe, high-quality care. From PET-CT and functional imaging testing to external beam radiation therapy, including stereotactic radiosurgery and stereotactic body radiotherapy (SRS/SBRT), brachytherapy, and radiopharmaceutical treatments, patients receive individualized care to meet their specific needs.



The American College of Radiation Oncology (ACRO) accredits our radiation oncology program, recognizing our compliance with strict, national standards for cancer patient safety and radiation oncology practices. UPMC

Hillman is the largest ACRO-accredited system in the nation.

### SURGICAL ONCOLOGY

Many patients undergo surgery as a first step in their cancer treatment to remove tumors and affected tissue or to confirm their diagnosis and guide their plan of care. Our board-certified surgical oncologists select from open, minimally invasive, and robotic-assisted surgeries based on each patient’s individual diagnosis and anatomy. UPMC Hillman offers some of the nation’s most experienced programs for minimally invasive and robotic-assisted procedures, which can allow for less blood loss, fewer complications, and faster recovery.

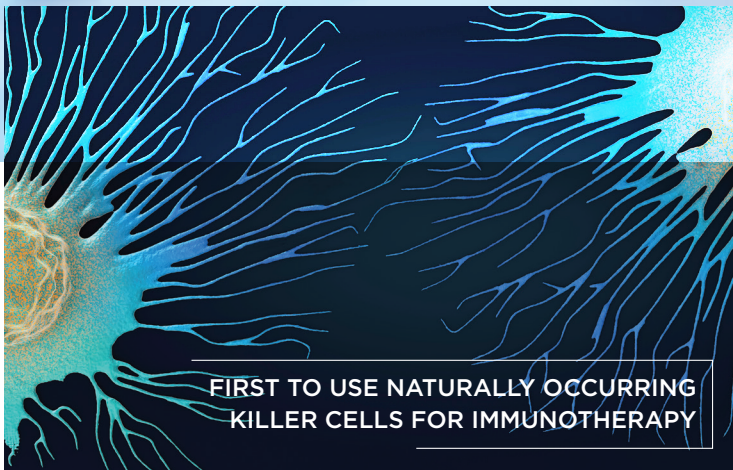
### SUPPORTIVE SERVICES

Because cancer can impact many aspects of a person’s entire life, UPMC Hillman provides a range of services to help patients and their families navigate the physical, emotional, financial, and logistical aspects of cancer care. These services include genetic counseling referrals, financial and insurance counseling, nutritional support, pain management, symptom and side effect management, tobacco cessation support, and more.

TO LEARN MORE ABOUT OUR CLINICAL CARE, VISIT [UPMCHILLMAN.COM](http://UPMCHILLMAN.COM).

THE NCI RECOGNIZES UPMC HILLMAN AS A COMPREHENSIVE CANCER CENTER FOR OUR SCIENTIFIC LEADERSHIP, RESOURCES, AND DEPTH AND BREADTH OF RESEARCH, AS WELL AS SUBSTANTIAL TRANSDISCIPLINARY RESEARCH THAT BRIDGES OUR SCIENTIFIC AREAS

# RESEARCH



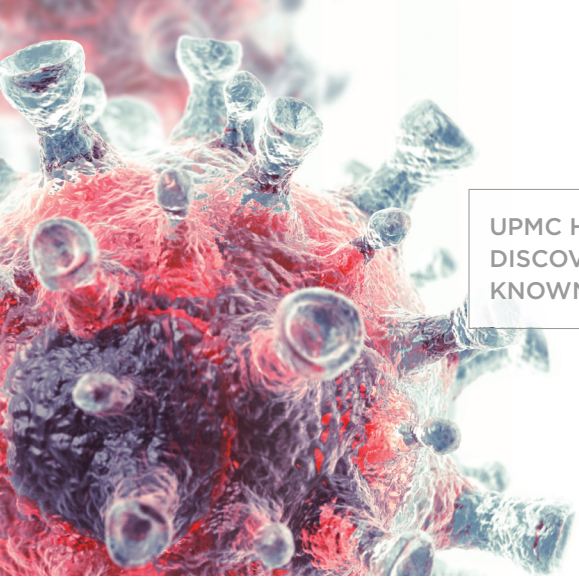
FIRST TO USE NATURALLY OCCURRING  
KILLER CELLS FOR IMMUNOTHERAPY

## OUR PROGRAMS AND RESOURCES

More than 300 scientists at UPMC Hillman work together to advance our understanding of cancer and its mechanisms through basic and translational science, clinical outcomes, and population-based research efforts. Our research is organized in seven formal programs, including biobehavioral cancer control, cancer biology, cancer epidemiology and prevention, cancer immunology and immunotherapy, cancer therapeutics, cancer virology, and genome stability.

TO LEARN MORE ABOUT OUR RESEARCH, VISIT [HILLMANRESEARCH.UPMC.EDU](https://hillmanresearch.upmc.edu).





UPMC HILLMAN RESEARCHERS  
DISCOVERED TWO OF THE SEVEN  
KNOWN CANCER-CAUSING VIRUSES

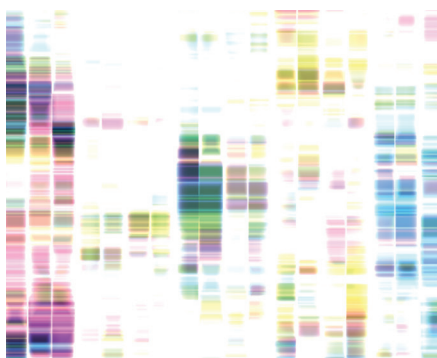
We hold NCI-sponsored Specialized Programs of Research Excellence (SPORE) grants to accelerate the movement of basic scientific findings into clinical care and to explore the biological basis for cancer in those who have been diagnosed with or are determined to be at risk in two areas: head and neck cancer and melanoma and skin cancer.

UPMC Hillman researchers have access to cutting-edge equipment, technology, and expertise through 10 NCI Cancer Center Support Grant-funded shared resources ranging from biostatistics and bioinformatics to genomic sequencing, cell and tissue imaging, and pharmacology.

ENGAGING OUR PATIENTS AND COMMUNITY

Clinical trials play a crucial role in our research at UPMC Hillman. We offer more than 400 trials including large, late-phase trials sponsored by the NCI's National Clinical Trials Network, industry-sponsored studies, and trials designed by our own UPMC Hillman researchers. Patients can enroll and participate in clinical trials at any UPMC Hillman network location.

Our ongoing outreach and education efforts aim to address the factors that influence cancer development among our population and to connect our community members with education, screenings, preventive care, and access to treatment services.



IN 2022, UPMC HILLMAN RESEARCHERS MOVED INTO THE RENOVATED FORD MOTOR COMPANY ASSEMBLY BUILDING — THE FIRST MAJOR EXPANSION OF OUR CANCER CENTER IN 20 YEARS



UPMC HILLMAN'S CELLULAR AND MONITORING LABORATORY TRANSFORMS CUTTING-EDGE SCIENTIFIC BREAKTHROUGHS INTO IMMUNOTHERAPIES TO TREAT CANCER AND OTHER DISEASES



# GET INVOLVED

## MAKE A GIFT

Philanthropic support is critical to UPMC Hillman's advancement of research and clinical care. As long as cancer exists, so will the need for philanthropy, which helps ensure that UPMC Hillman remains a world-class institution with leading-edge research, state-of-the-art equipment, innovative treatment programs, effective screening and prevention tools, and caring support systems for patients and their families.

Every gift — no matter how large or small — makes an impact, and there are many ways to give, including:



Online at  
**[UPMCHillman.com/Donate](https://UPMCHillman.com/Donate)**



By phone at **412-623-4700**  
(Monday – Friday, 8:30 a.m.  
to 5 p.m. EST)



By mail:  
**Development Office**  
**UPMC Cancer Pavilion, Suite 1B**  
**5150 Centre Ave.**  
**Pittsburgh, PA 15232**

SCAN ME



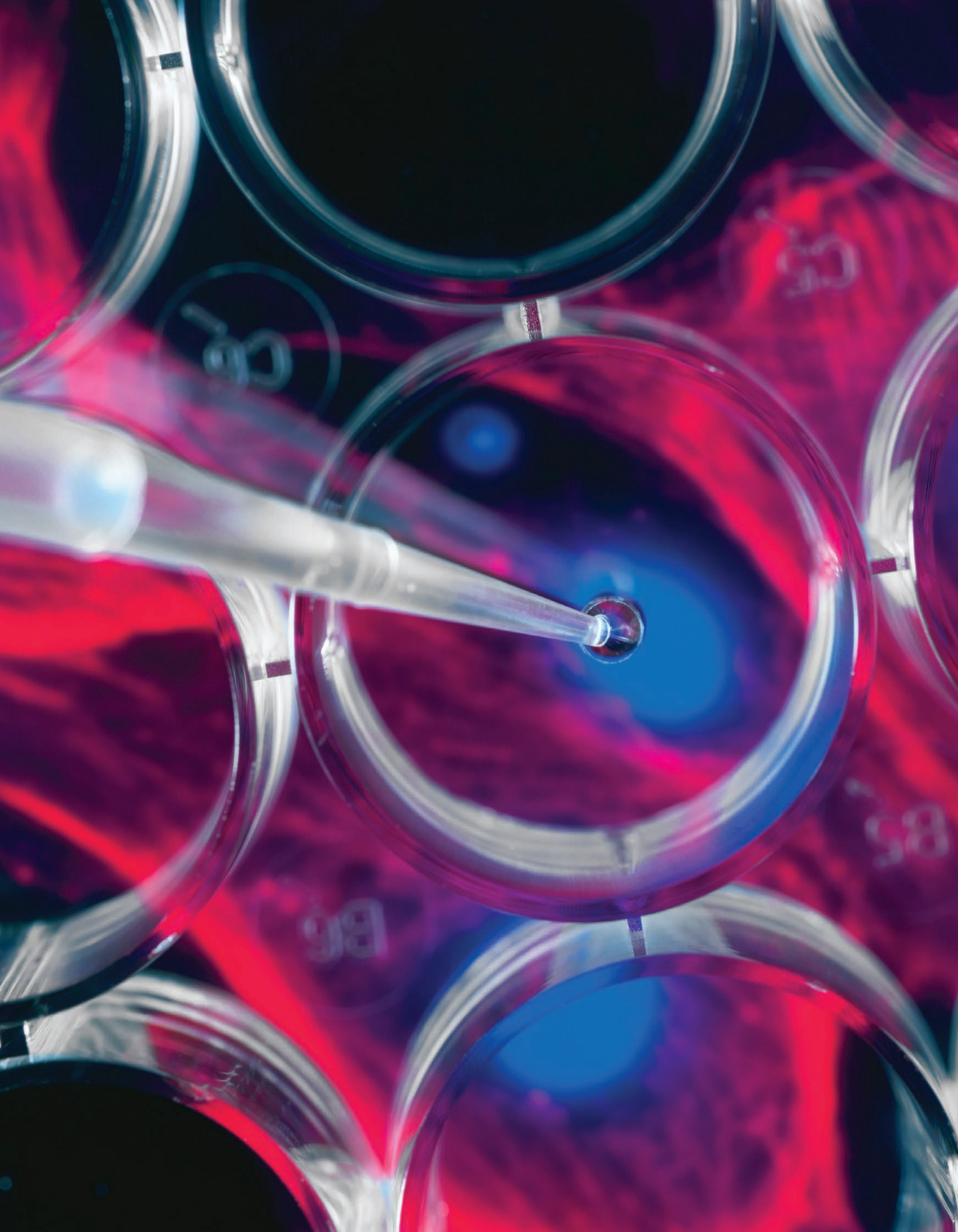
For more information or to inquire about other giving opportunities, contact us at **412-623-4700** or **[givetohillman@upmc.edu](mailto:givetohillman@upmc.edu)**.

## VOLUNTEER

There are many volunteer opportunities for individuals 18 and older that can accommodate school, social, or work schedules. To learn more, call **412-623-4636** or email **[hccvolunteer@upmc.edu](mailto:hccvolunteer@upmc.edu)**.

## JOIN OUR TEAM

UPMC Hillman has career opportunities in clinical, research, administrative, and operational roles across our network. To learn more, please visit **[UPMCHillman.com/Careers](https://UPMCHillman.com/Careers)**.



# UPMC | HILLMAN CANCER CENTER

5150 Centre Ave.  
Pittsburgh, PA 15232  
UPMCHillman.com  
1-855-960-0578

UPMC is an equal opportunity employer. UPMC policy prohibits discrimination or harassment on the basis of race, color, religion, ancestry, national origin, age, sex, genetics, sexual orientation, gender identity, gender expression, marital status, familial status, disability, veteran status, or any other legally protected group status. Further, UPMC will continue to support and promote equal employment opportunity, human dignity, and racial, ethnic, and cultural diversity. This policy applies to admissions, employment, and access to and treatment in UPMC programs and activities. This commitment is made by UPMC in accordance with federal, state, and/or local laws and regulations.